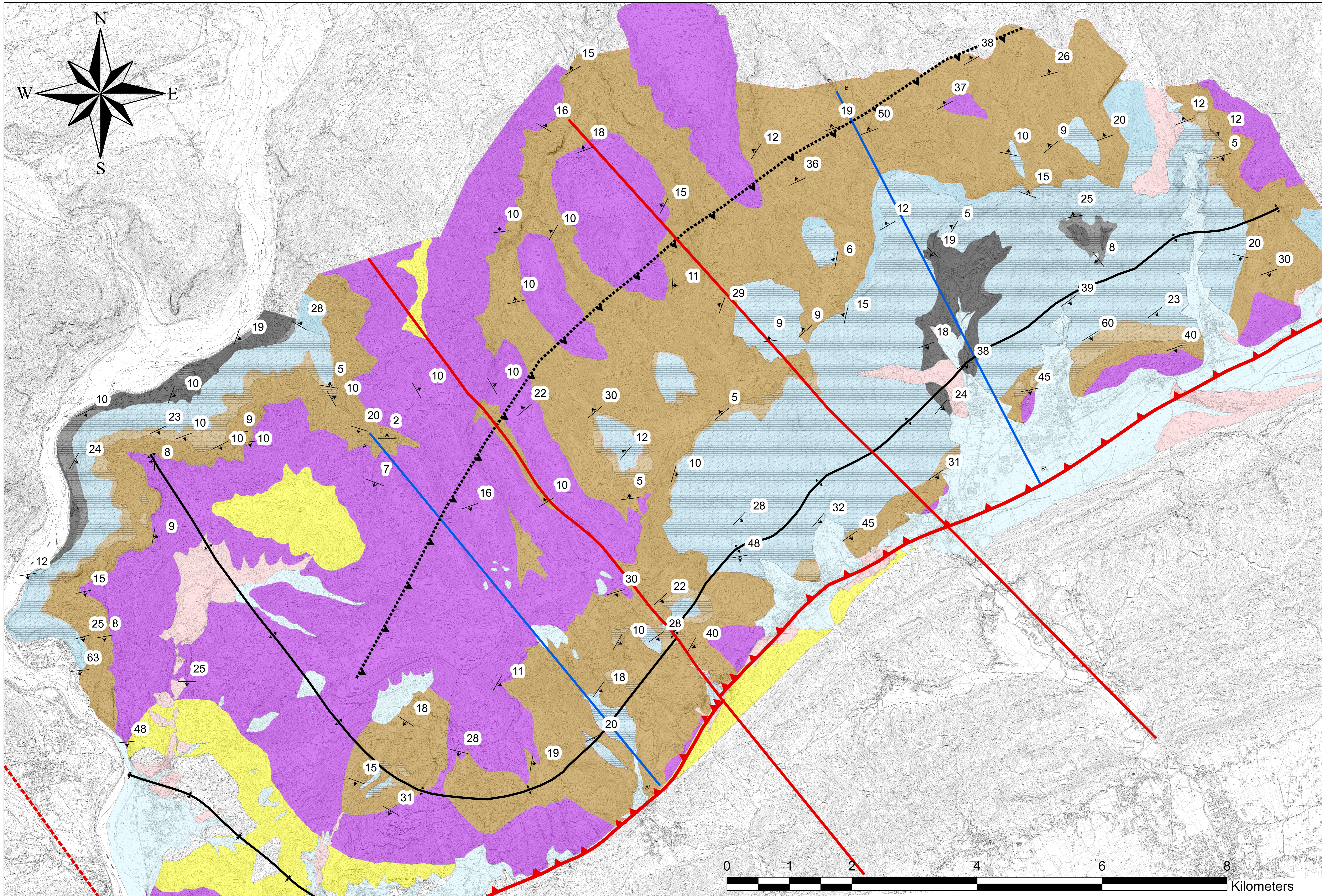


Geological map of the Col Visentin-Monte Garda

Area of interest

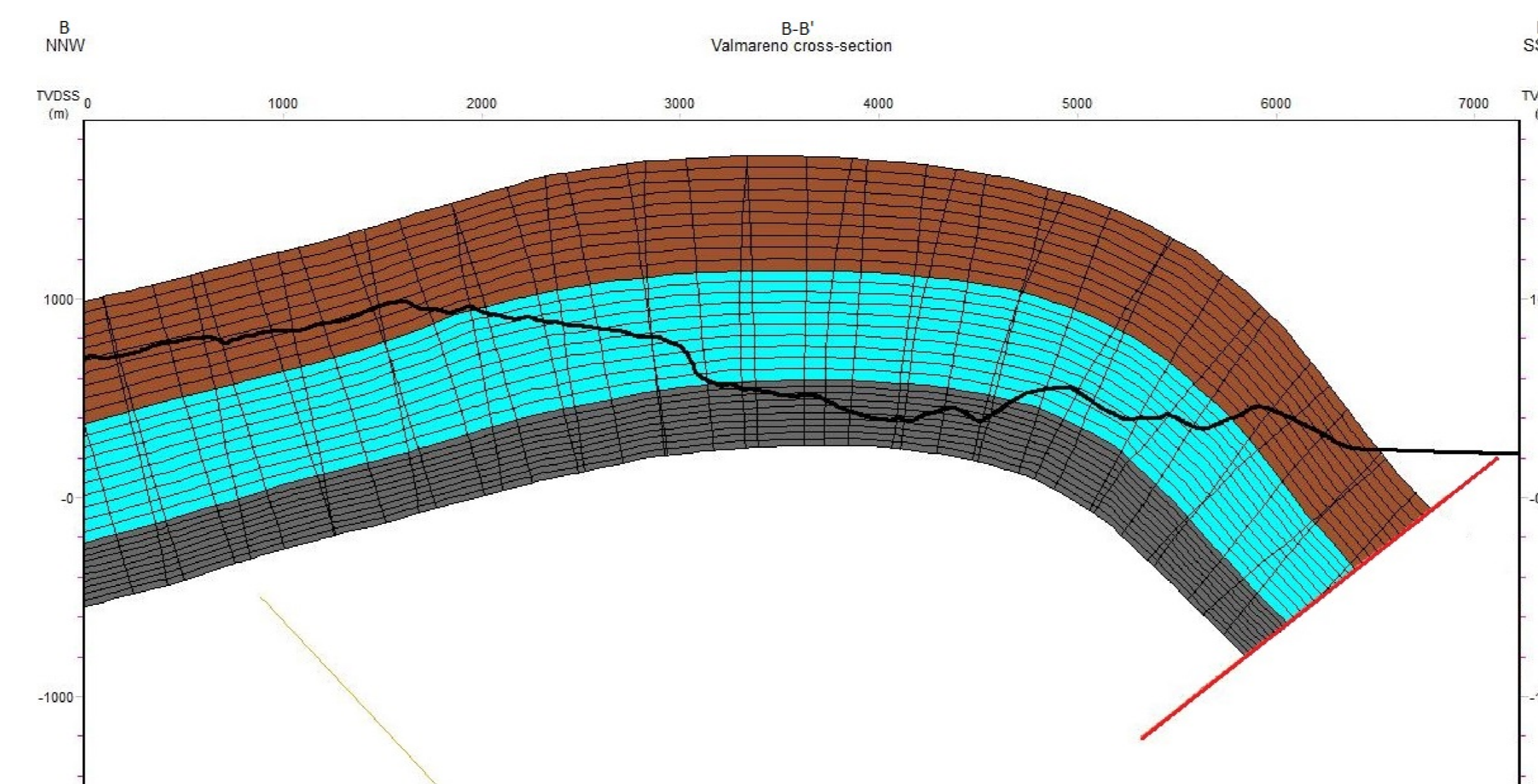
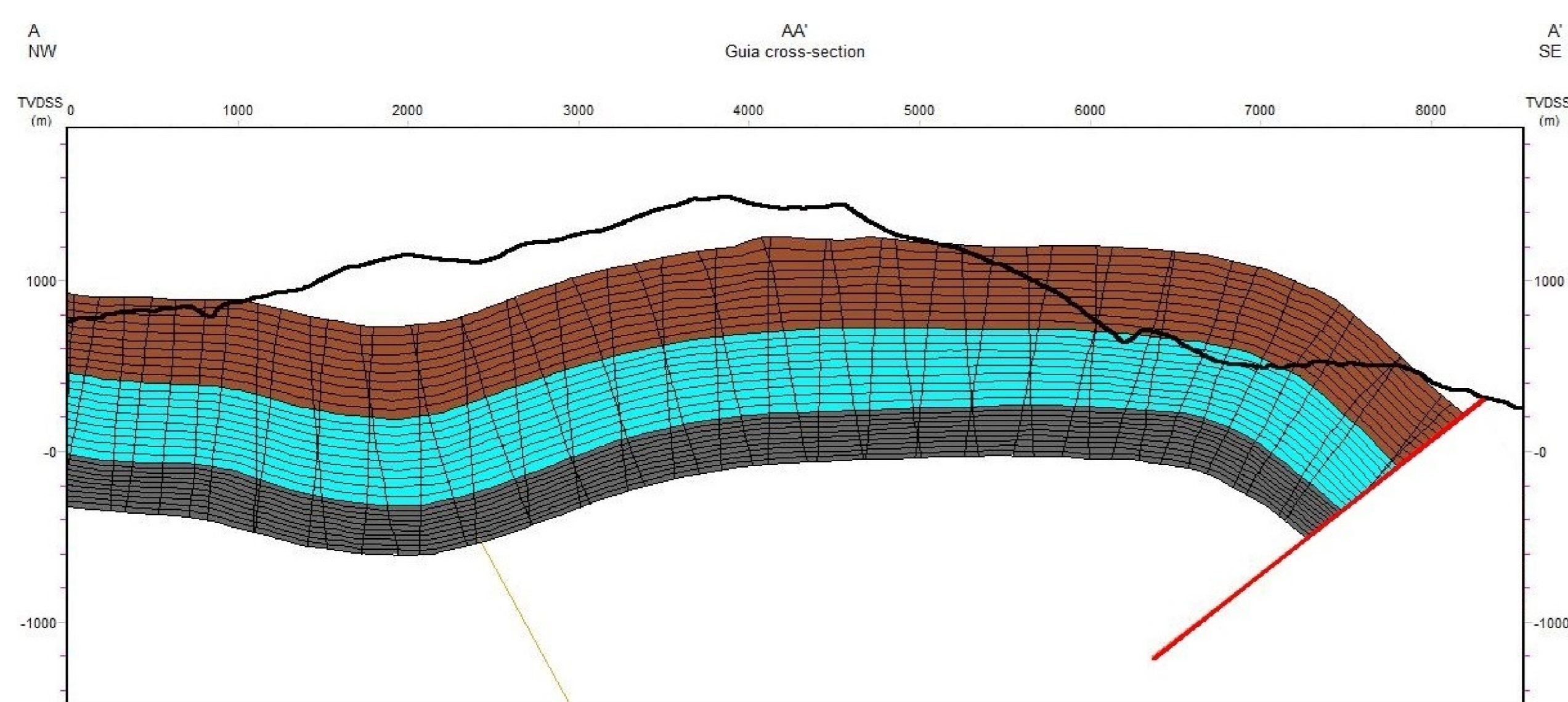


Legend

- gps point
- Combai fault
- Follina fault
- Back-thrust
- Quero-strike slip
- Bassano-Valdobbiadene thrust
- anticlinal
- syncline

Lithology

- Holocene
- Pleistocene
- Scaglia Variegata Alpina
- Maiolica Formation
- Fonzaso Formation
- Vajont Oolitic Limestone
- Igne Formation



UNIVERSITA' DEGLI STUDI DI PADOVA

GEOSCIENCES DEPARTMENT

Geological map of the Col Visentin - Monte Garda anticline (TV)

Author: Salvetti Giordano

Survey performed during September-November 2017