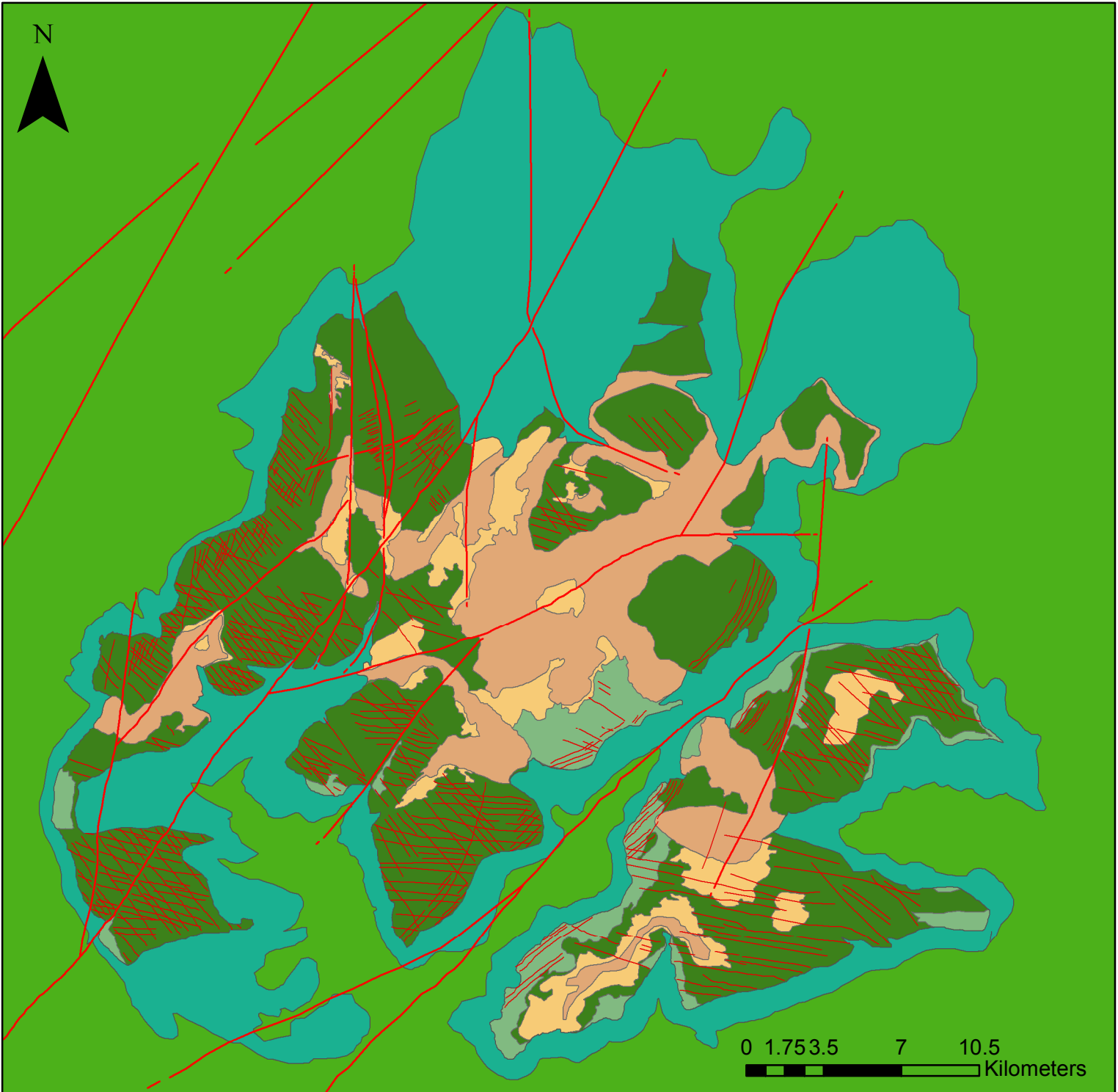


GEOLOGIC MAP OF CHIMANTA' MASSIF (VENEZUELA)

1:250,000

Inama Riccardo

Università degli Studi di Padova - Dipartimento di Geoscienze



Legend

— Main fractures

— Joints

Alteration zone

Diabase (Middle Proterozoic to Mesozoic)

Upper Mataui formation (Early to Middle Proterozoic)

Lower Mataui formation (Early to Middle Proterozoic)

Uamaipue formation (Early to Middle Proterozoic)

Lower Roraima group (Early to Middle Proterozoic)