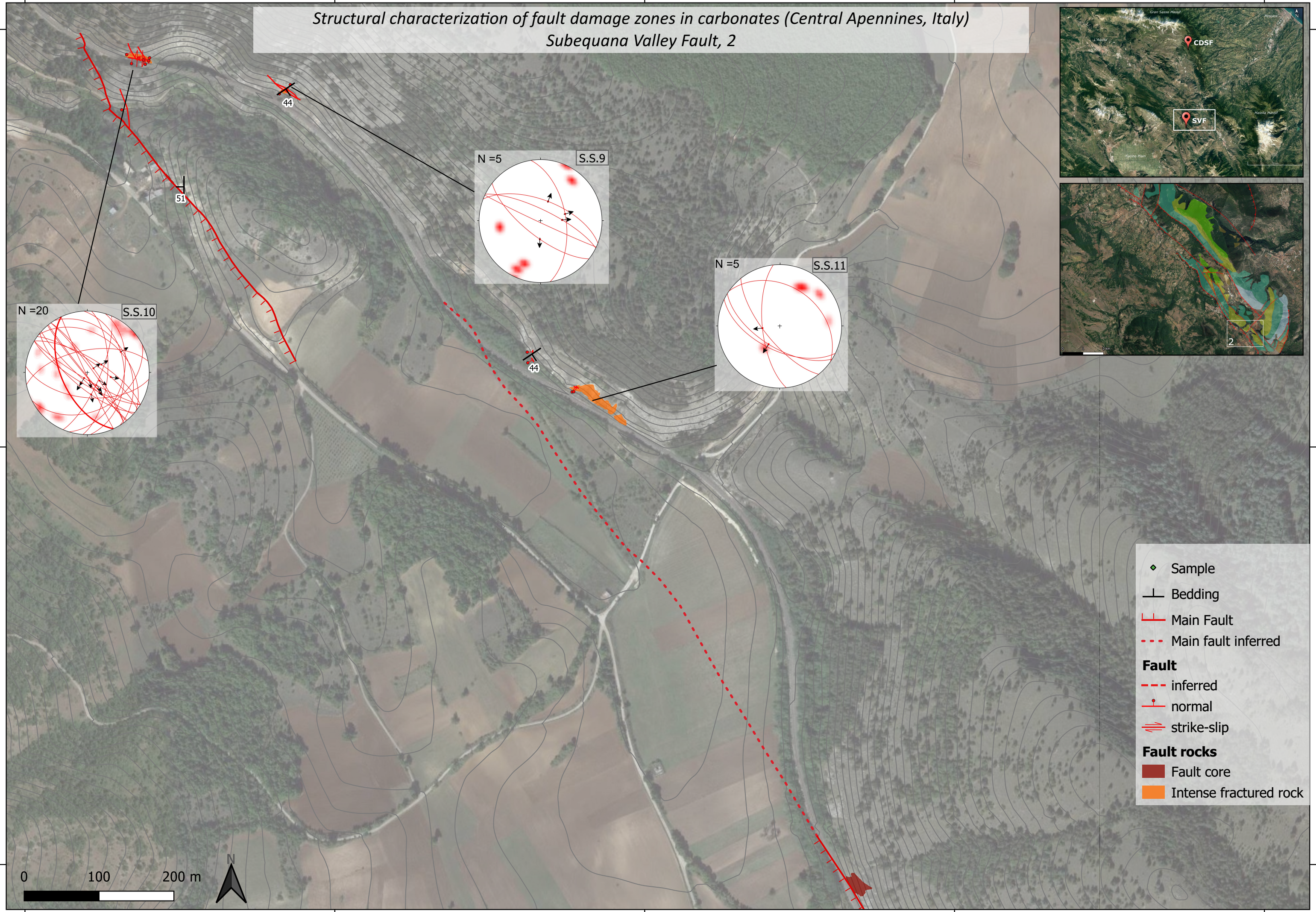


Structural characterization of fault damage zones in carbonates (Central Apennines, Italy)  
 Subequana Valley Fault, 2



- ◆ Sample
- └ Bedding
- Main Fault
- - - Main fault inferred
- Fault**
- - - inferred
- normal
- ≡ strike-slip
- Fault rocks**
- Fault core
- Intense fractured rock

0 100 200 m



13°46'48" 13°47'6" 13°47'24" 13°47'42" 13°48'0"

42°3'54"

42°3'54"

42°4'12"

42°4'12"

42°4'30"

42°4'30"