



UNIVERSITÀ
DEGLI STUDI
DI PADOVA

Dipartimento di Geoscienze

Studio biostratigrafico a conodonti della sezione di Kastelli, Peloponneso settentrionale, Grecia

Laurea triennale in Scienze Geologiche

A.A. 2015/2016

Relatore: Dott. Manuel Rigo

Laureanda: Elisa Milizia

Matricola: 1075553

Obiettivo

- Studio biostratigrafico finale della sezione di Kastelli

Biostratigrafia a conodonti

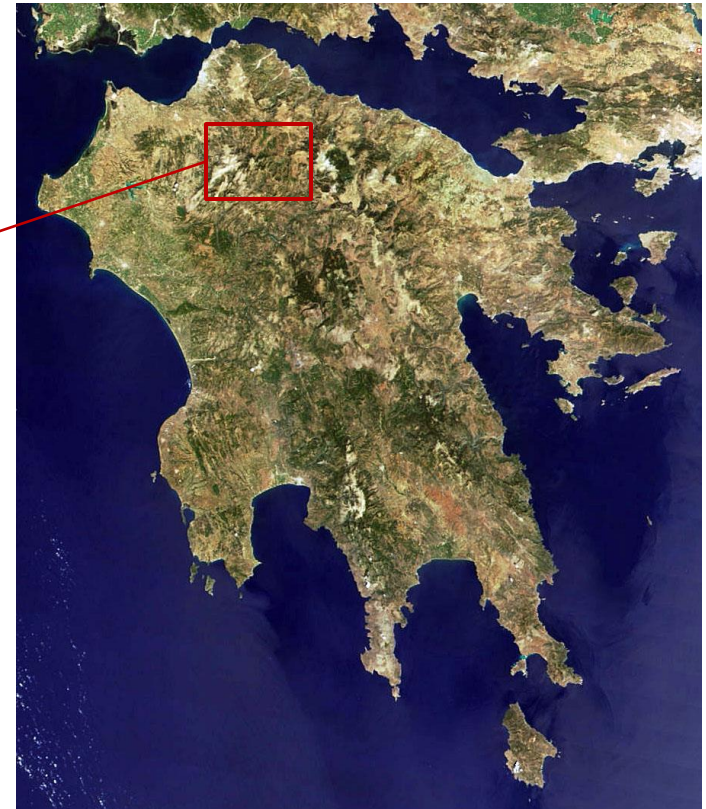
- Microfossili di fluoroapatite
 - Ottimi fossili guida per il Triassico
-
- Datazione relativa della sezione di Kastelli

Sezione Kastelli

- Posizione geografica:

Grecia occidentale, N-O Peloponneso,
catena montuosa Pindos - Olonos

Montagne Pindos - Olonos



Sezione Kastelli

- Posizione geografica:
 - ad ovest del raccordo fra le strade Kalavrita-Klitoria e Kalavrita-Aroania
 - coordinate geografiche: $37^{\circ} 54' 33''$ N, $22^{\circ} 02' 48''$ E

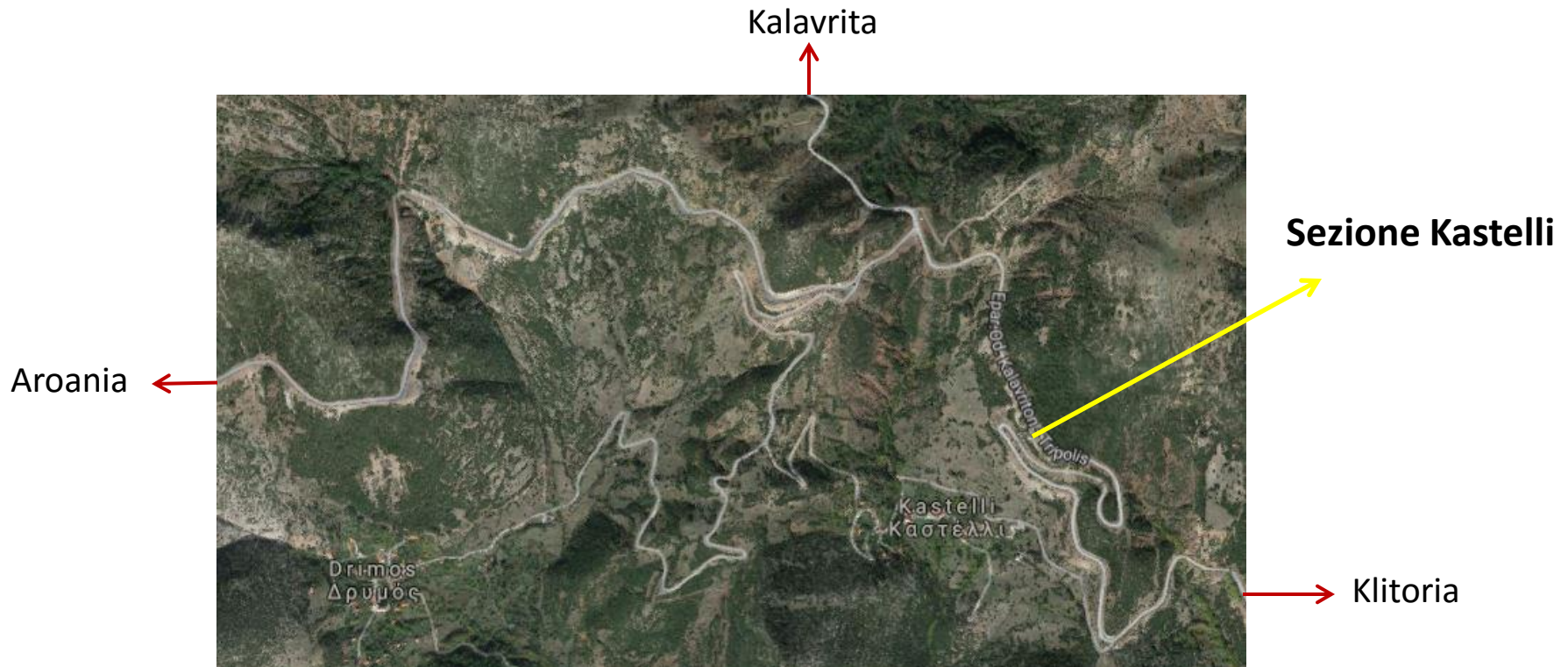
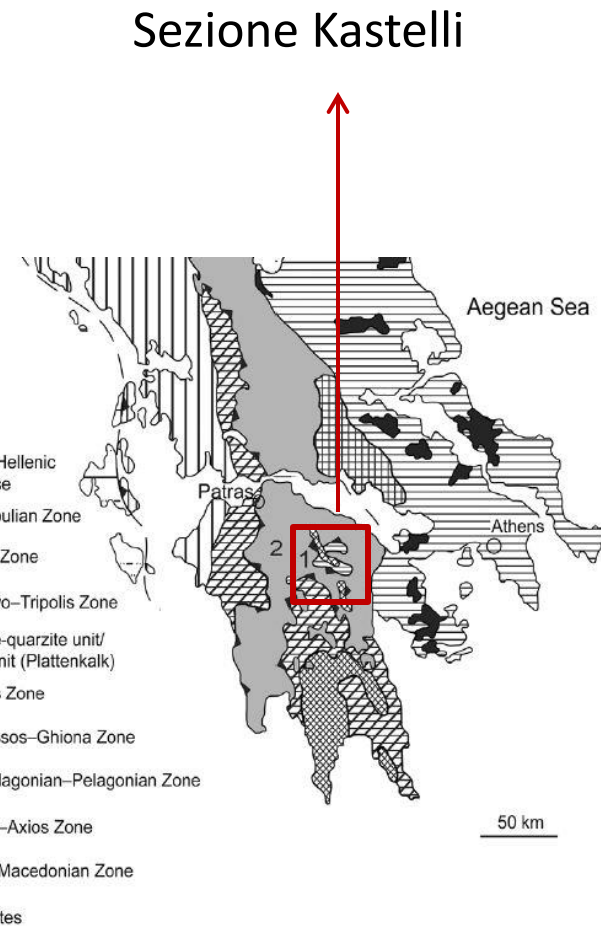
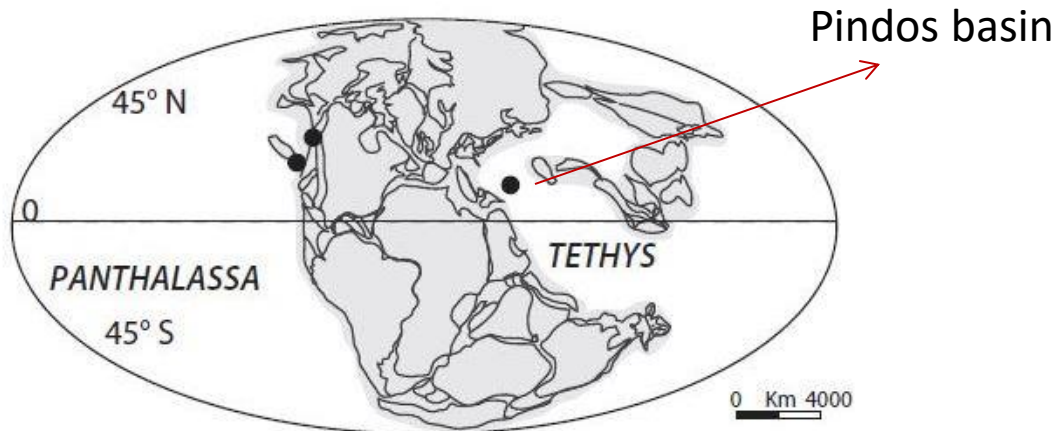


Immagine da Google Maps

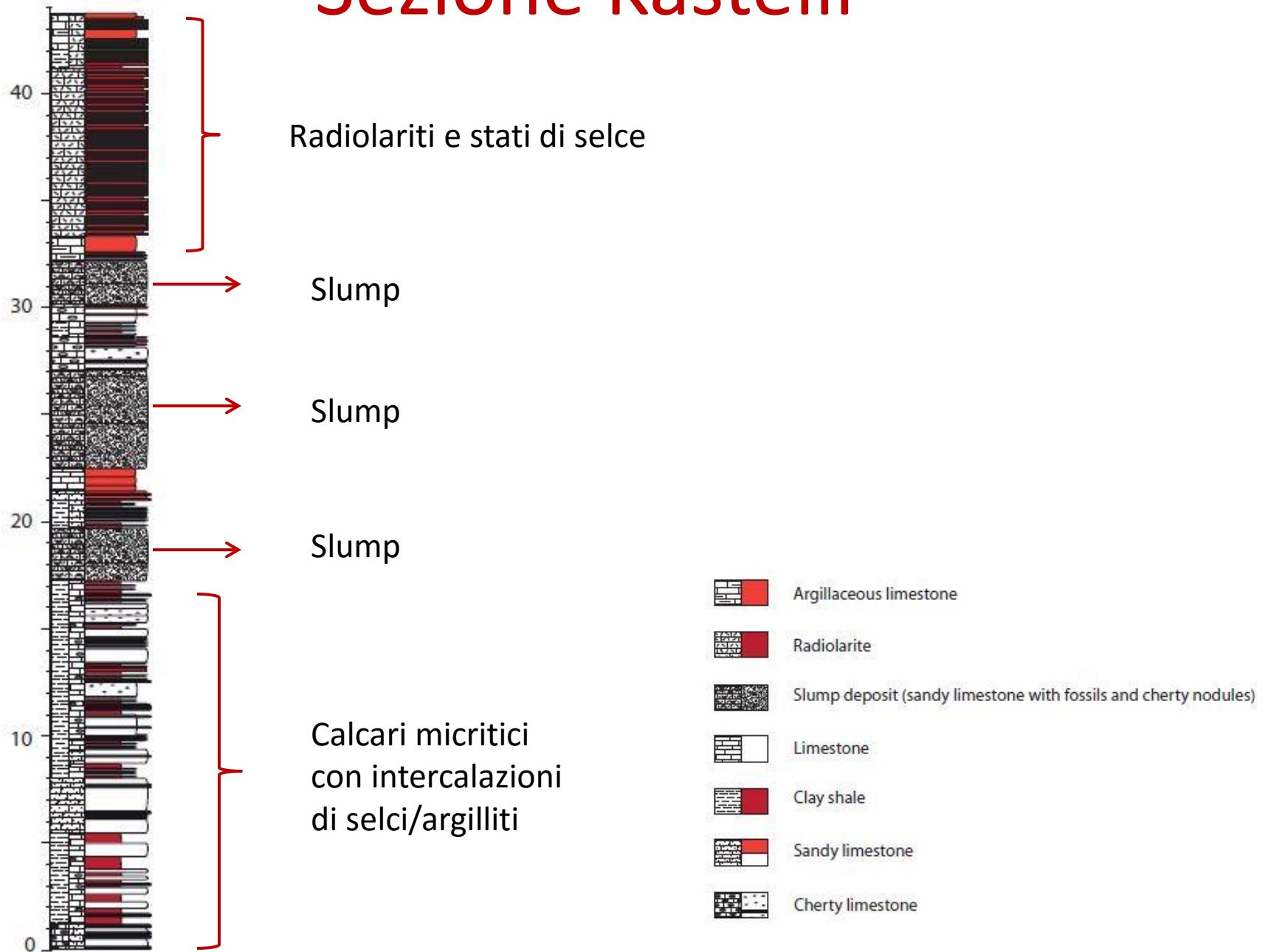
Sezione Kastelli

- Inquadramento geologico:
 - Successione sedimentaria del **bacino di Pindos**
 - **Formazione dei Calcari di Drimos**
 - Calcari micritici con bivalvi
 - Radiolariti rosse/verdi
 - Selce
 - **Triassico Superiore - Giurassico Inferiore**



Sezione Kastelli

Formazione dei Calcari di Drimos



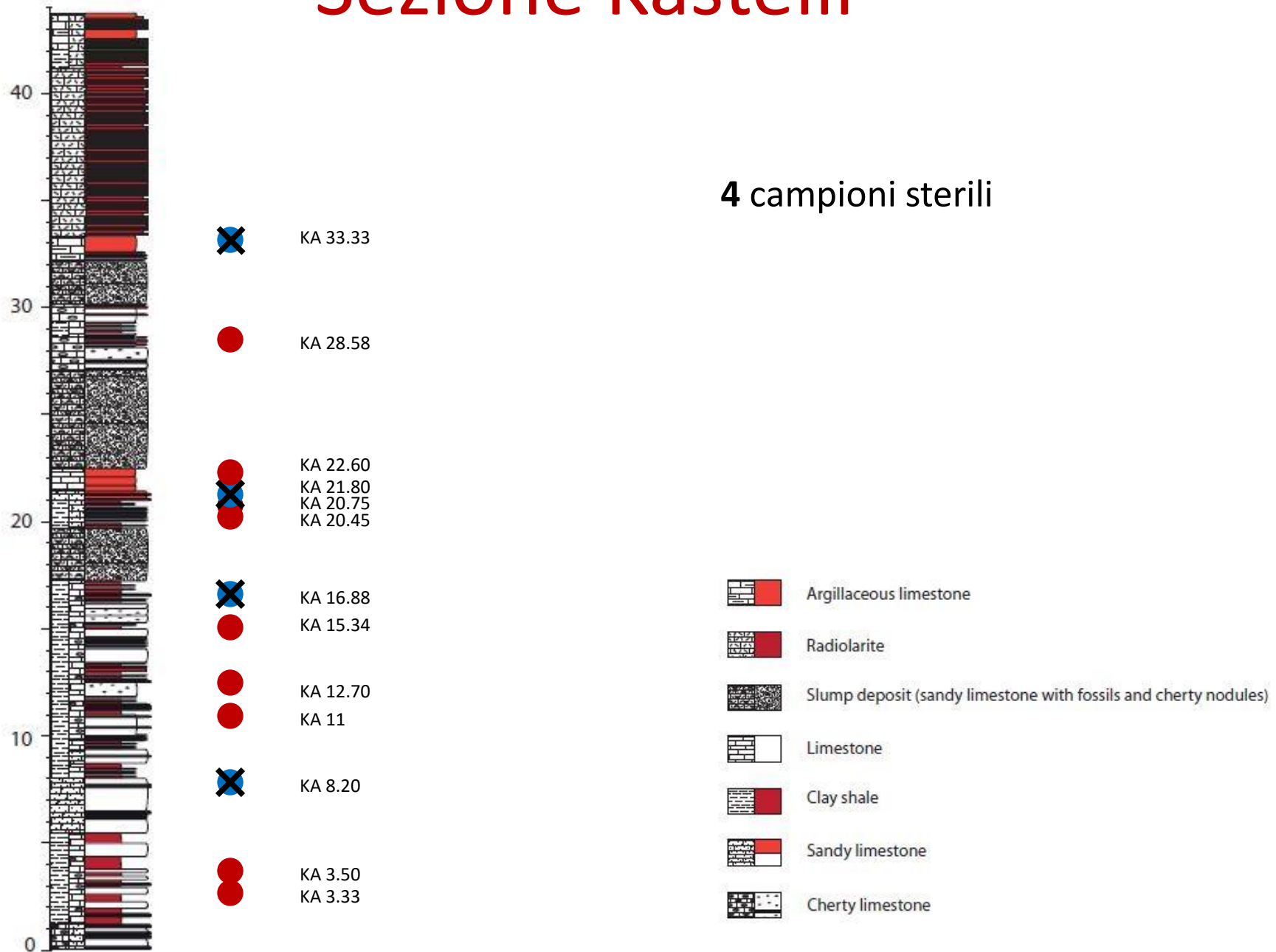
Sezione Kastelli

Formazione dei Calcari di Drimos



Sezione Kastelli

Formazione dei Calcari di Drimos

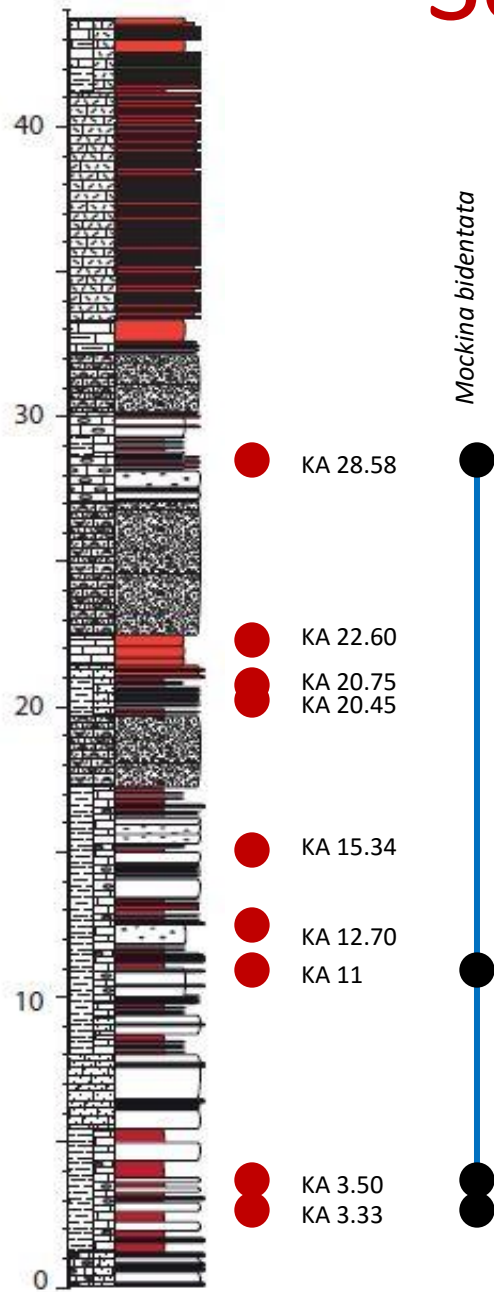


Sezione Kastelli

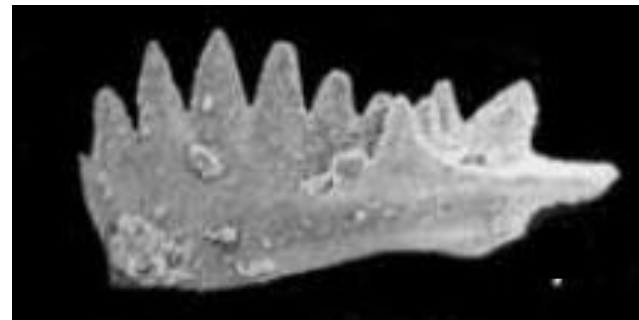
Formazione dei Calcari di Drimos



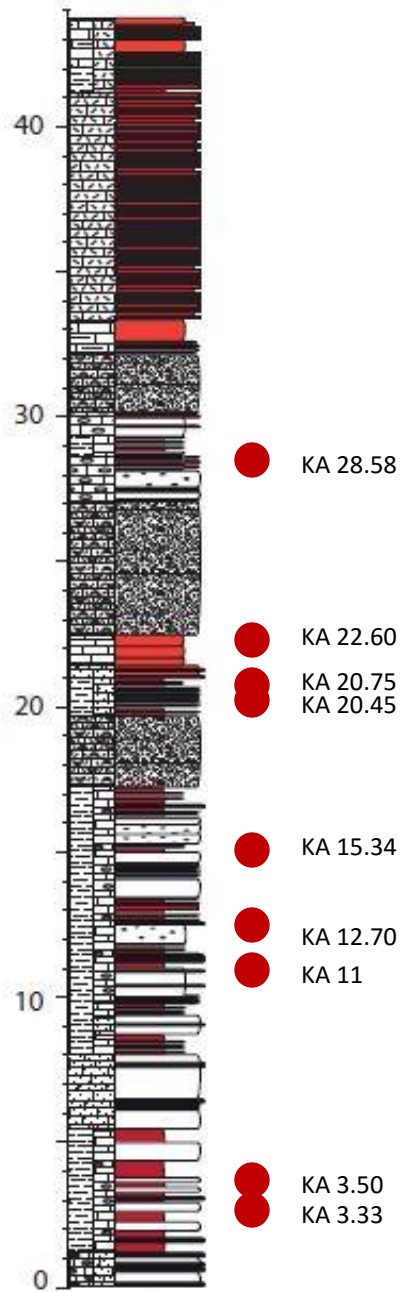
Sezione Kastelli



Mockina bidentata



Sezione Kastelli



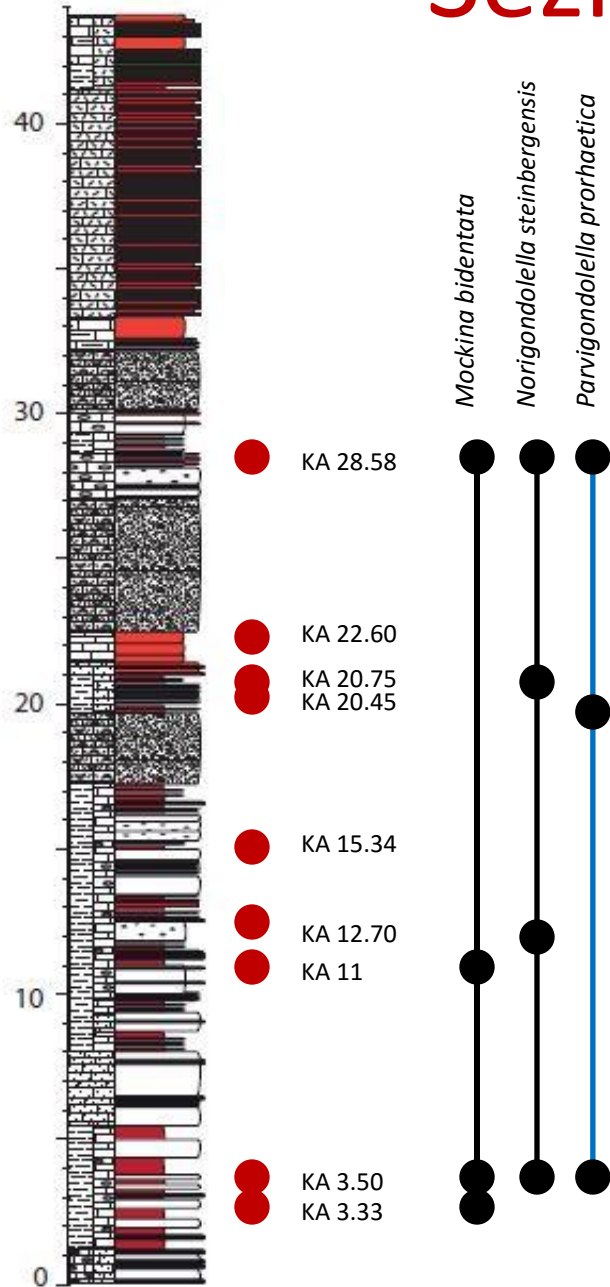
Mockina bidentata
Norigondolella steinbergensis



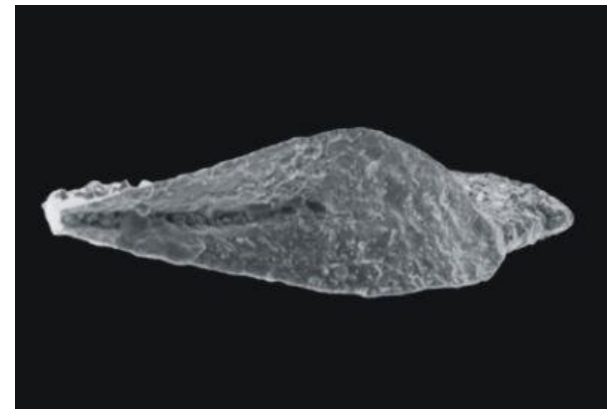
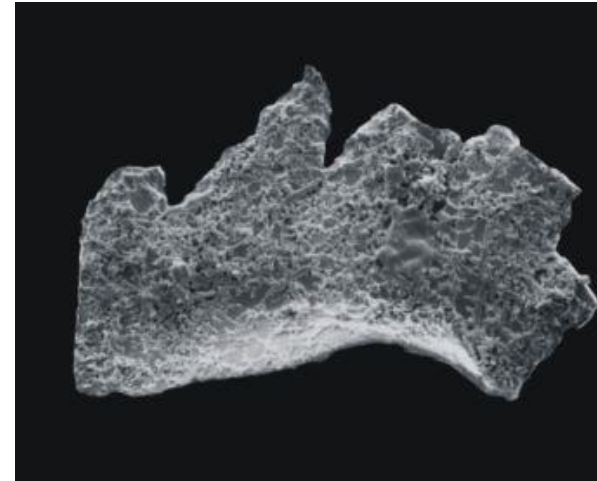
Norigondolella steinbergensis



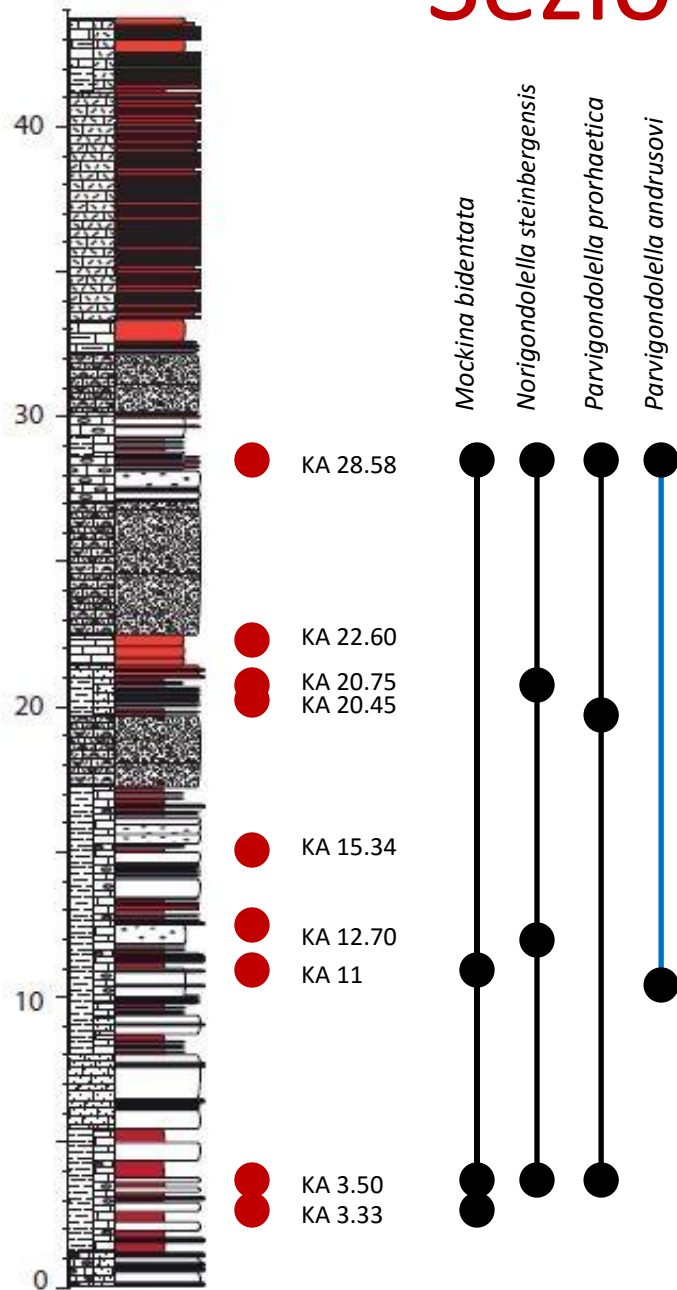
Sezione Kastelli



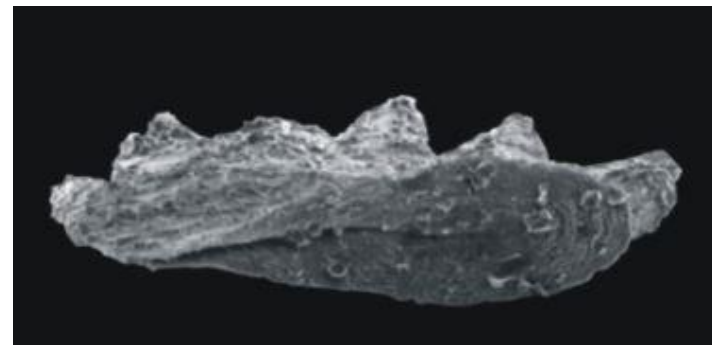
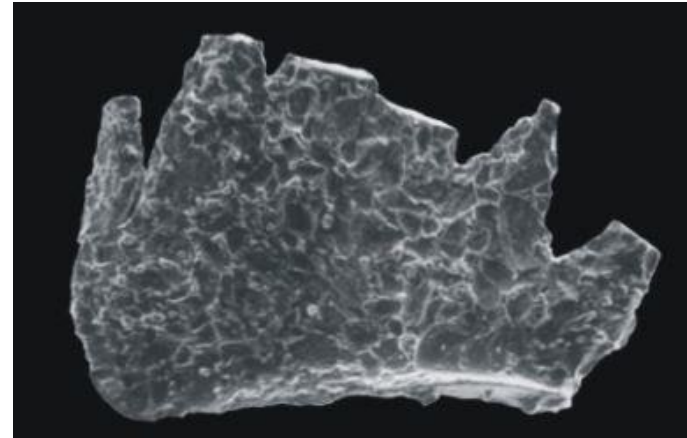
Parvigondolella prorhaetica



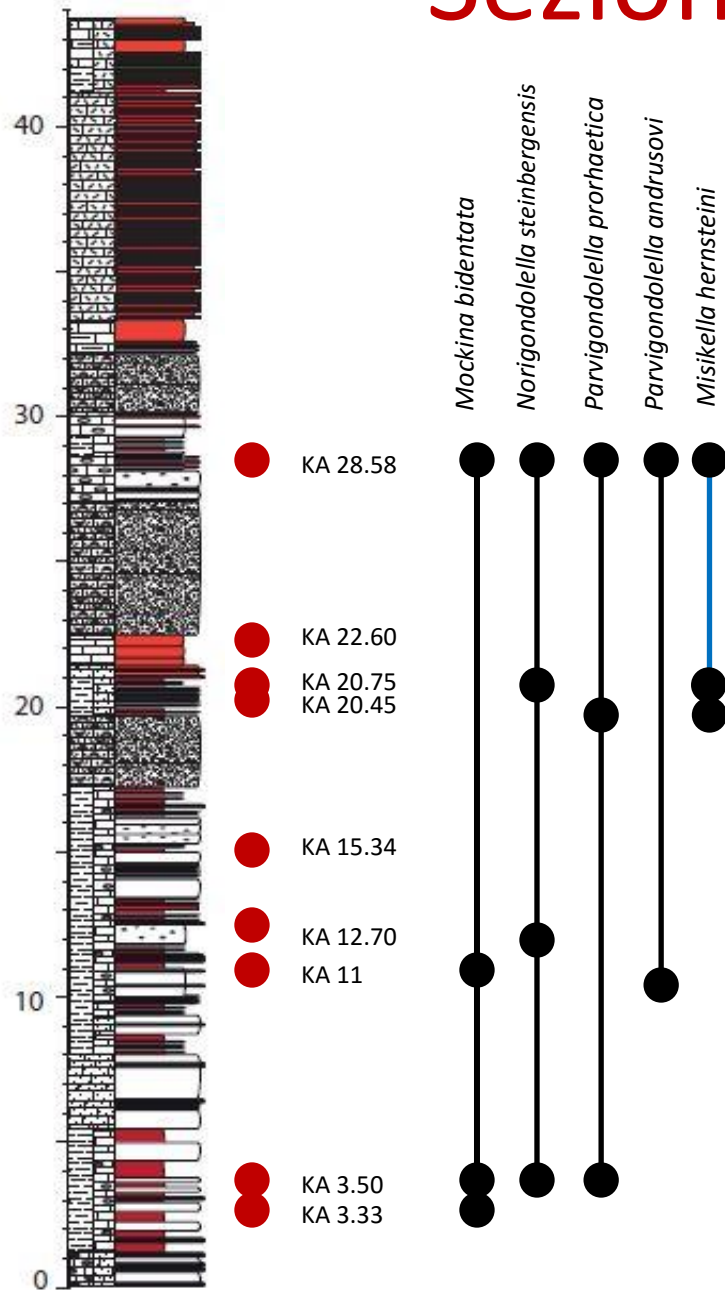
Sezione Kastelli



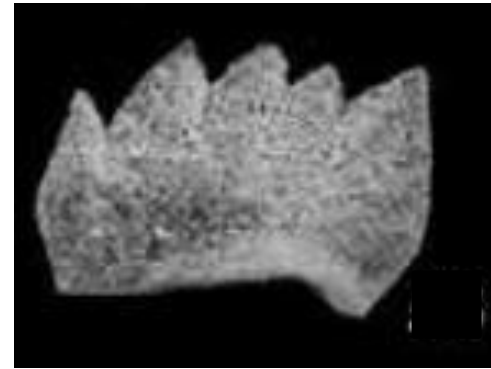
Parvigondolella andrusovi



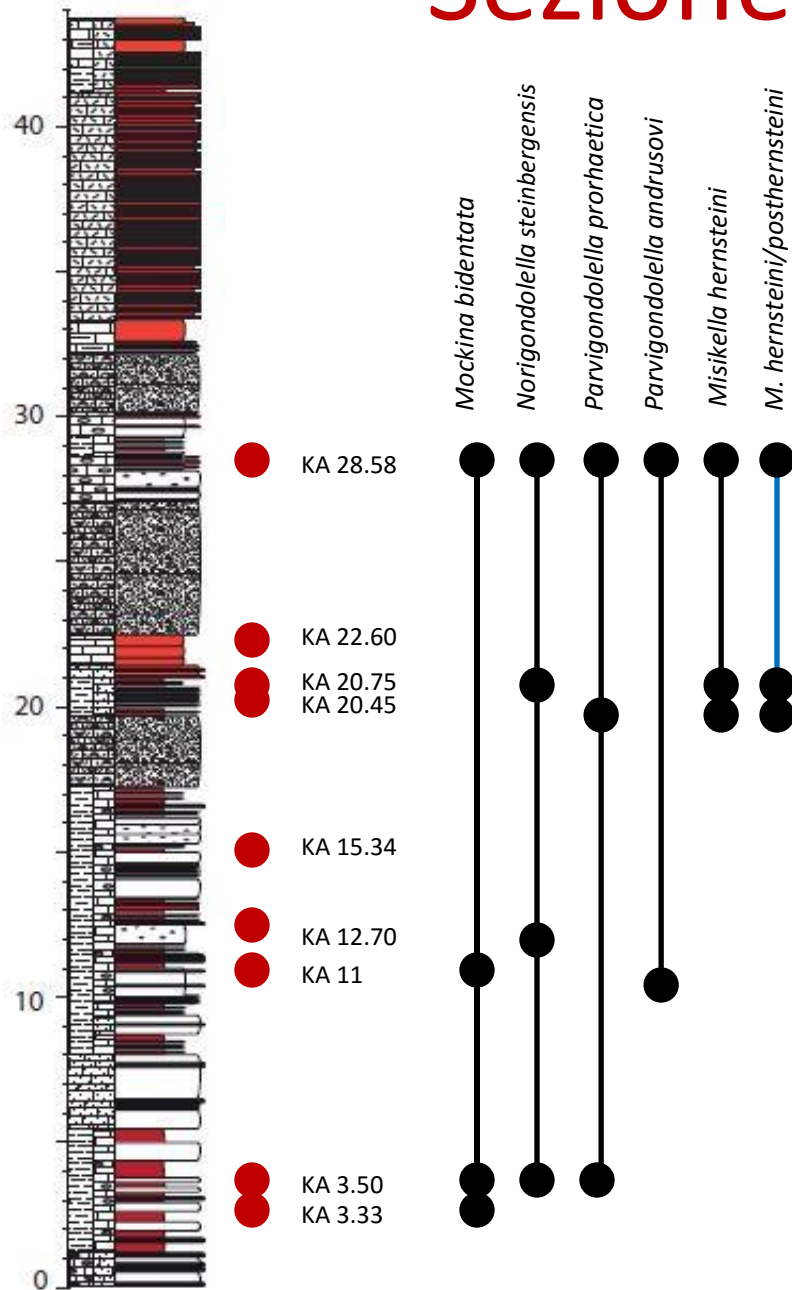
Sezione Kastelli



Misikella hernsteini



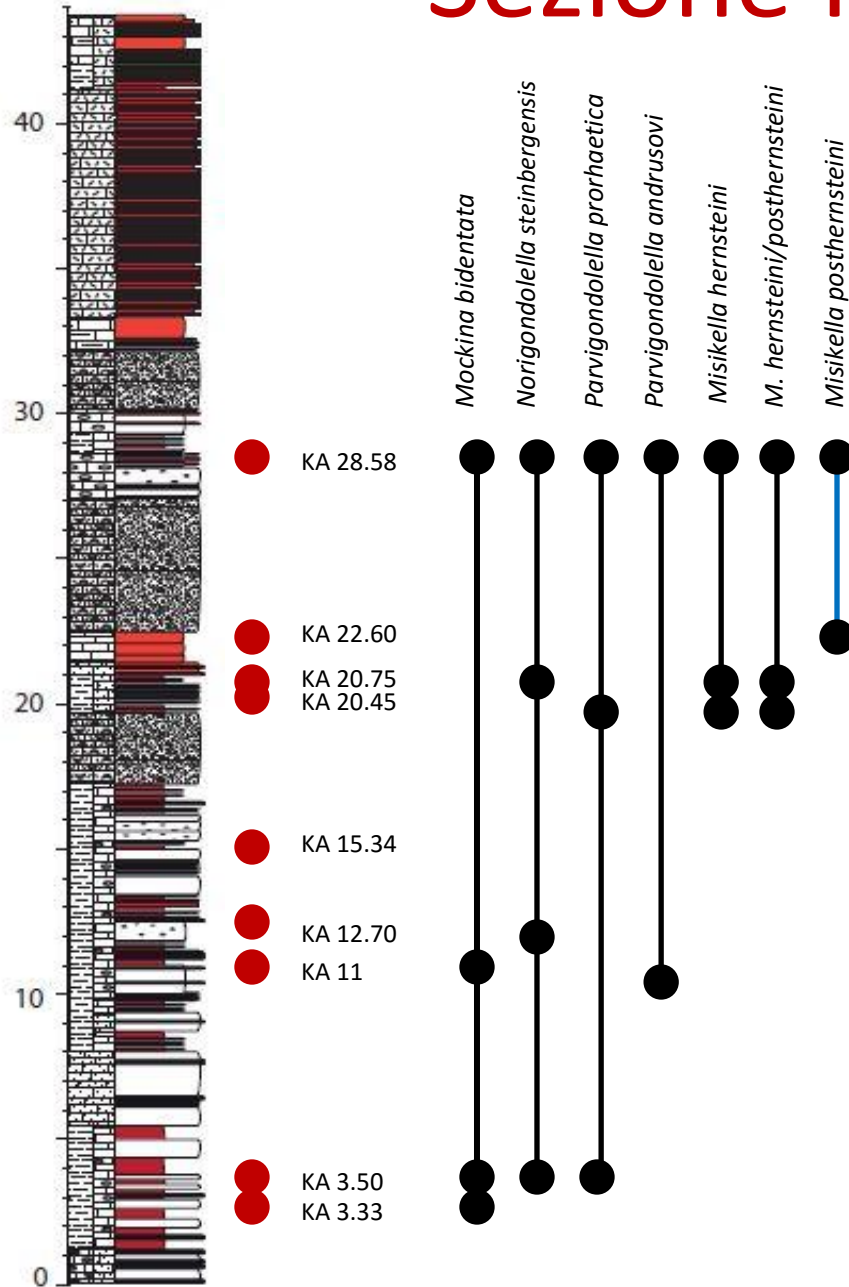
Sezione Kastelli



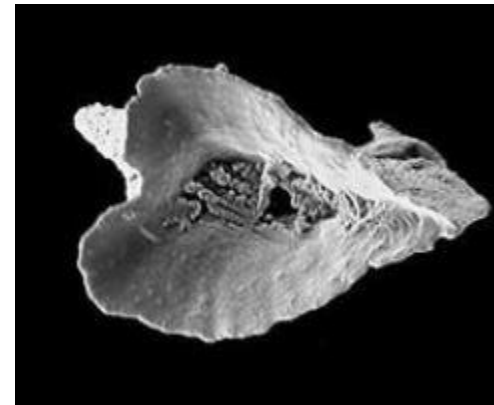
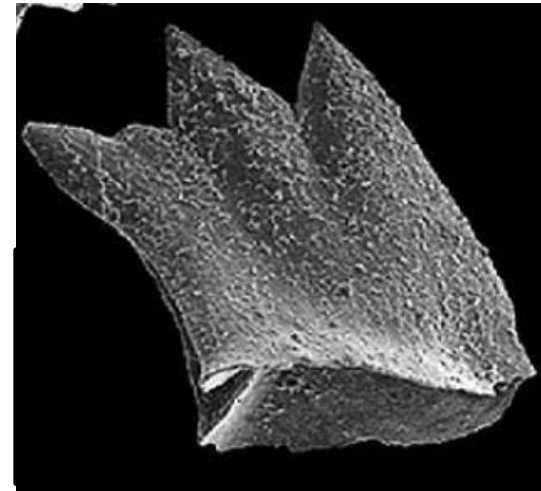
**Forme di transizione
Misikella
hernsteini/posthernsteini**



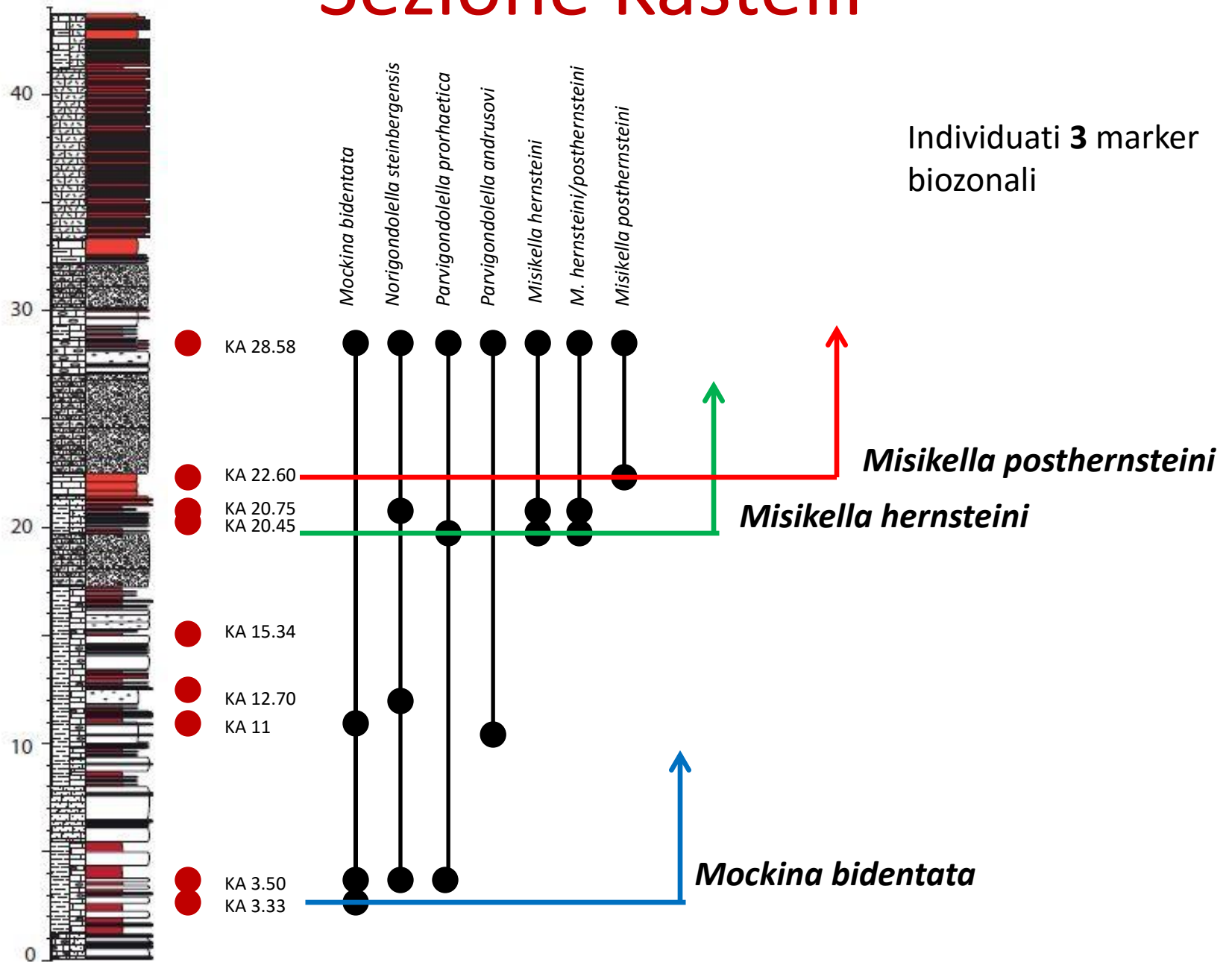
Sezione Kastelli



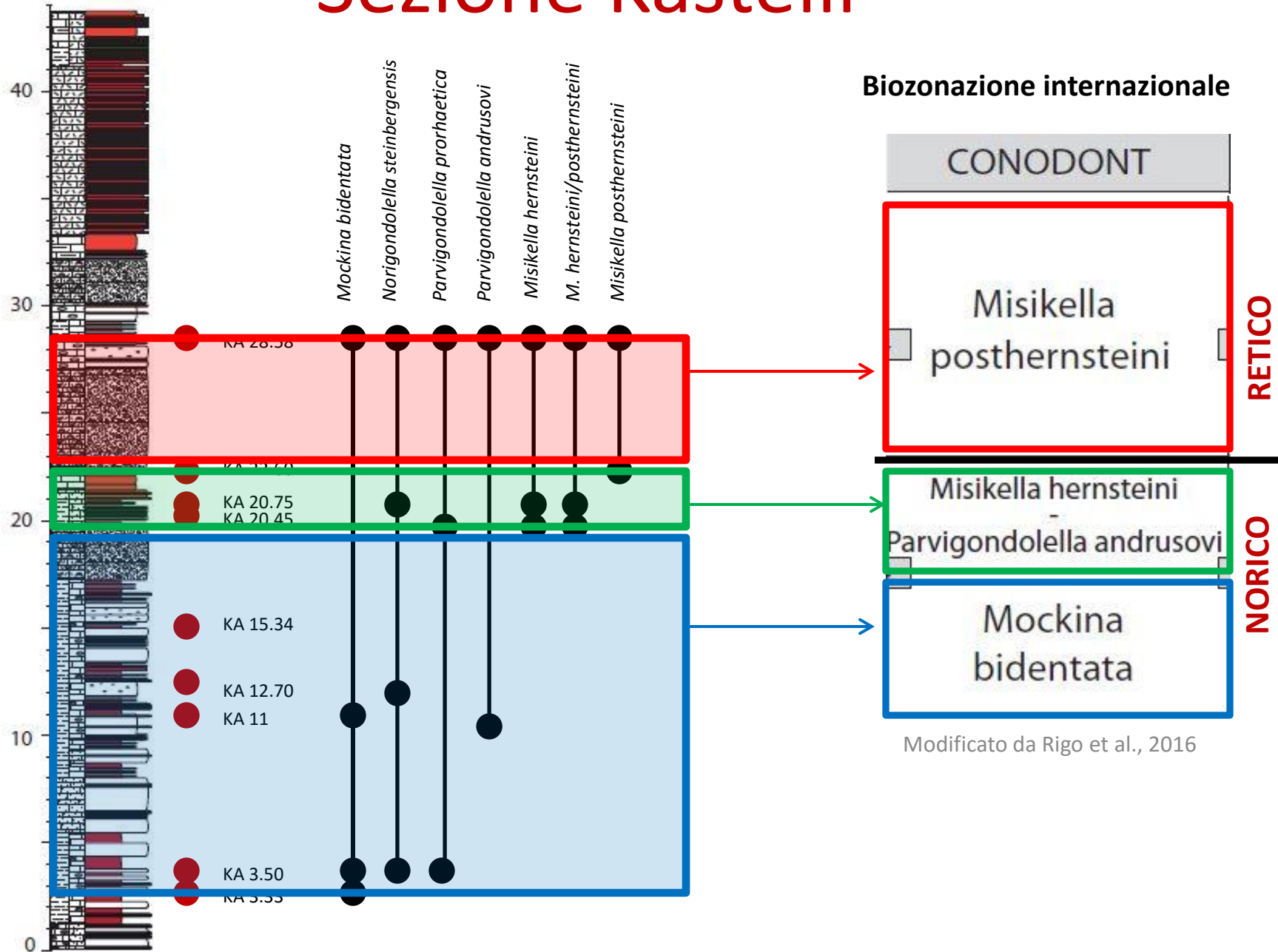
Misikella posthernsteini



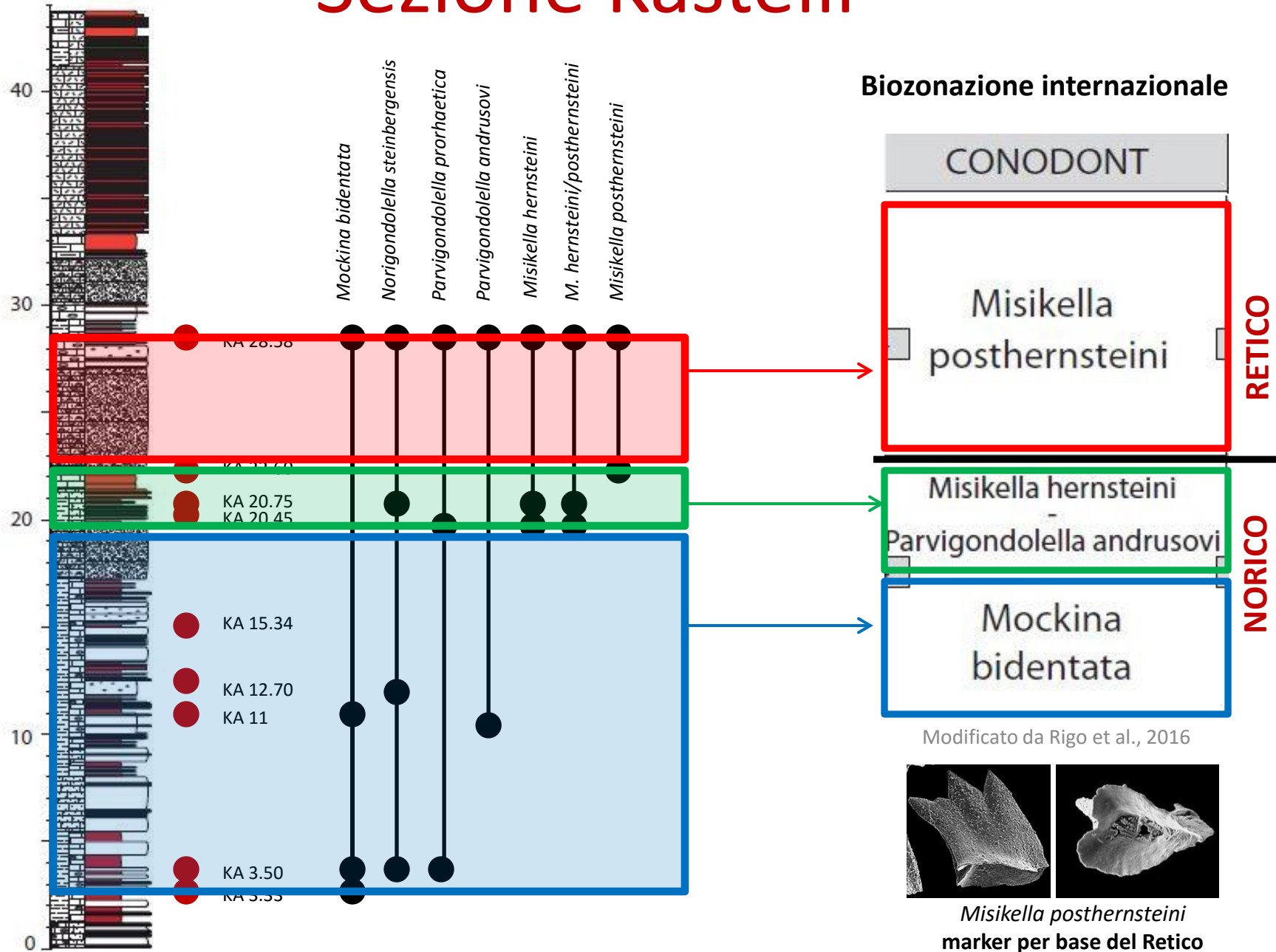
Sezione Kastelli



Sezione Kastelli



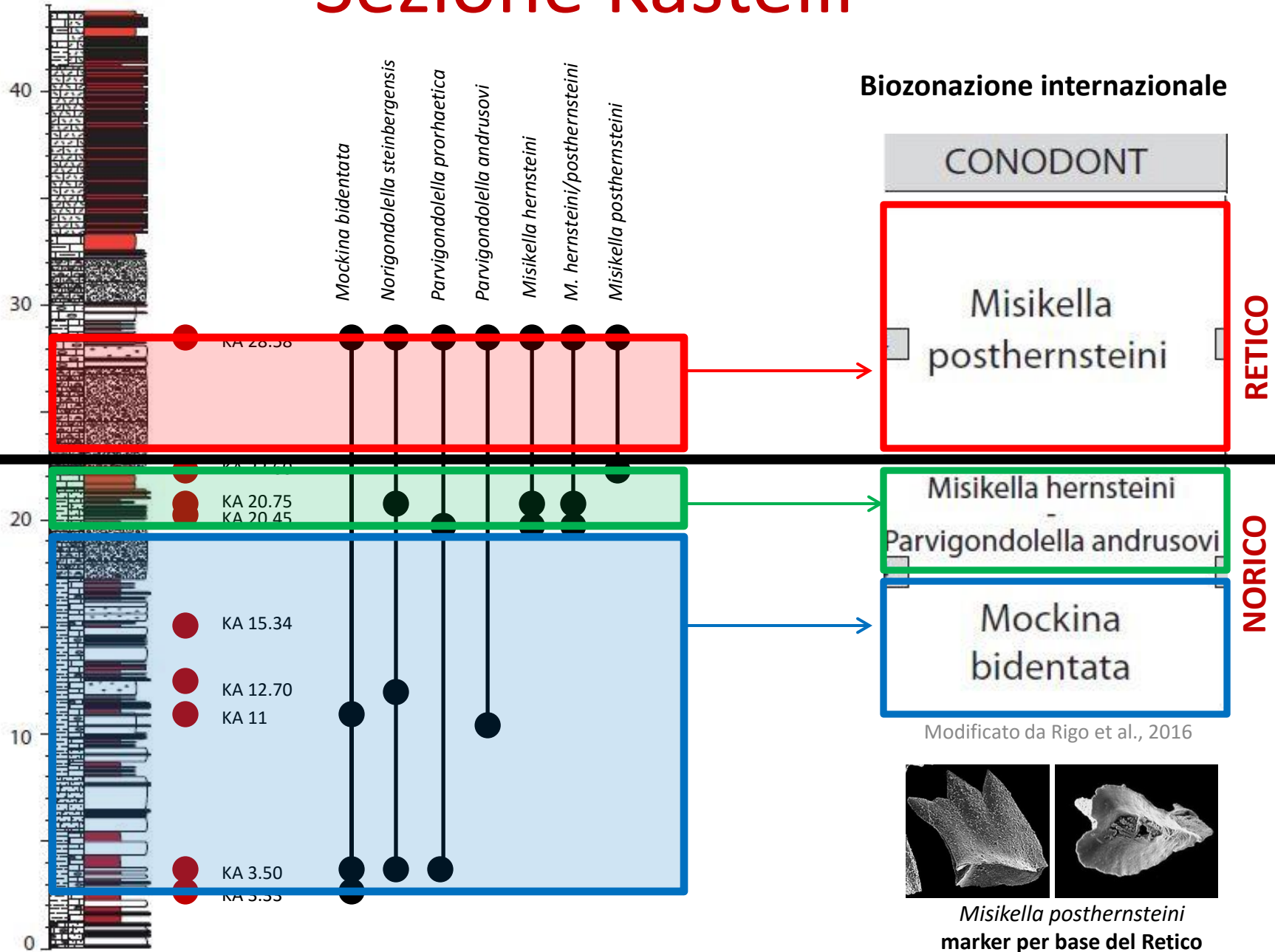
Sezione Kastelli



Sezione Kastelli

RETICO

NORICO



Conclusioni

- Concluso lo studio biostratigrafico a conodonti della sezione di Kastelli
- Individuati i marker biozonali a conodonti e le relative biozone
- Tracciato il limite fra Norico e Retico nella sezione Kastelli grazie alla comparsa della *Misikella posthernsteini* (22.60 m)

Bibliografia

- Degan & Robertson, Mesozoic-early Tertiary passive margin evolution of the Pindos ocean (NW Peloponnese, Greece), 1998, *Sedimentary Geology*, 117, 33-70
- Rigo et al., The Pignola-Abriola section (southern Apennines, Italy): a new GSSP candidate for the base of the Rethian stage, 2015, *Lethaia*
- Kafousia et al., A global event with a regional character: the Early Toarcian Oceanic Anoxic Event in the Pindos Ocean (northern Peloponnese, Greece), 2011, *Geological Magazine*, 2011, 148, 4, 619-631
- J.E.T. Channel et al., Carnian-Norian biomagnetostratigraphy at Silická Brezová (Slovakia): correlation to other Tethyan sections and to the Newark Basin, 2002, *PALAEO, Palaeogeography, Palaeoclimatology, Palaeoecology* 191 (2003) 65-109
- J. Pálffy et al., Triassic–Jurassic boundary events inferred from integrated stratigraphy of the Csóvár section, Hungary, 2006, *PALAEO, Palaeogeography, Palaeoclimatology, Palaeoecology* 244 (2007) 11–33
- Giordano et al., New biostratigraphical constraints for the Norian/Rhaetian boundary: data from Lagonegro Basin, Southern Apennines, Italy, 2010, *Lethaia*

**GRAZIE
PER
L'ATTENZIONE**