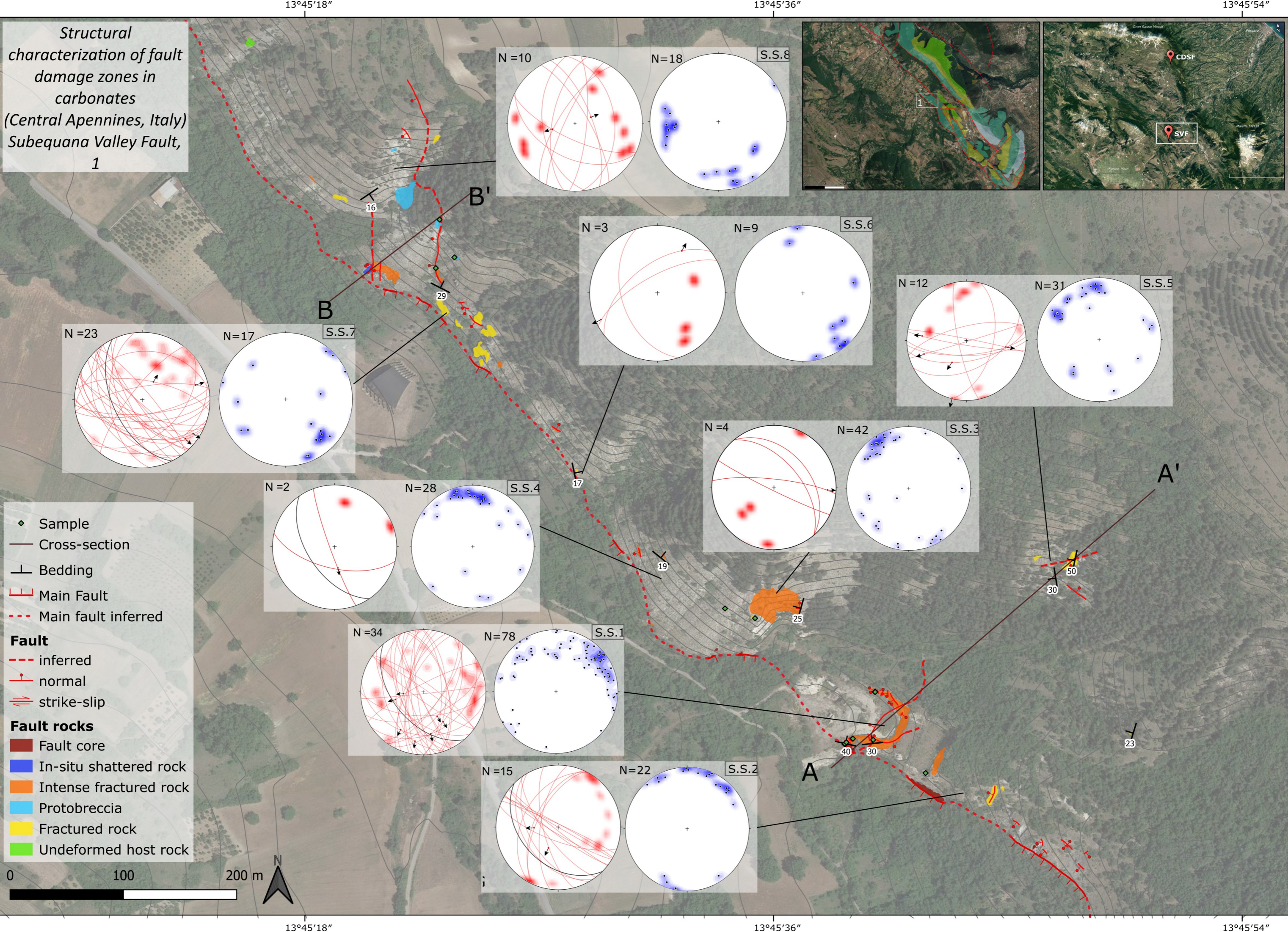
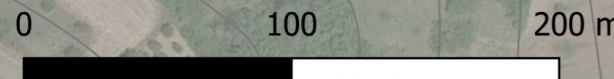


Structural characterization of fault damage zones in carbonates (Central Apennines, Italy)
Subequana Valley Fault, 1

- ◆ Sample
 - Cross-section
 - └ Bedding
 - ┌ Main Fault
 - ⋯ Main fault inferred
- Fault**
- ⋯ inferred
 - ┌ normal
 - ≡ strike-slip
- Fault rocks**
- Fault core
 - In-situ shattered rock
 - Intense fractured rock
 - Protobreccia
 - Fractured rock
 - Undeformed host rock



13°45'18" 13°45'36" 13°45'54" 42°6'18" 42°6'18" 42°6'0" 42°6'0" 13°45'18" 13°45'36" 13°45'54"