

# Setto laterale piano quinto scala 1: 50

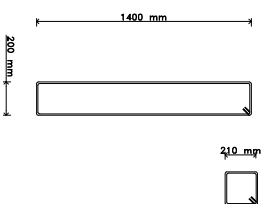
## MATERIALI IMPIEGATI

ACCIAIO:

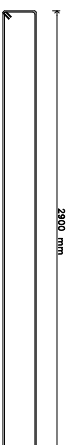
TONDINO ACCIAIOSO AD ADERENZA MIGLIORATA FeB44 K [  $f_yk = 430 \text{ N/mm}^2$  ] [  $f_t/Rk < 1.5$  ]  
[  $1.15 < f_t/f_y < 1.35$  ]

CALCESTRUZZO:	CLASSE RESISTENZA	CLASSE ESPOSIZIONE		CLASSE CONSISTENZA
		EN/206-UNI9888	EN206	
SETTI	Rck 300 (C25/30)	2A	XC3	S3
	GRADO COMPATTAZIONE $G_c > 0.97$			

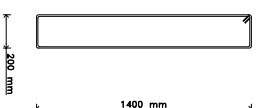
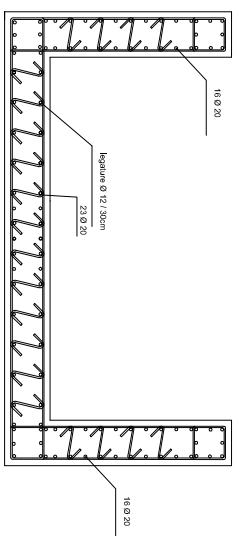
- E' PRESCRITTA LA VIBRATURA MECCANICA DEI GETTI



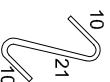
200 mm



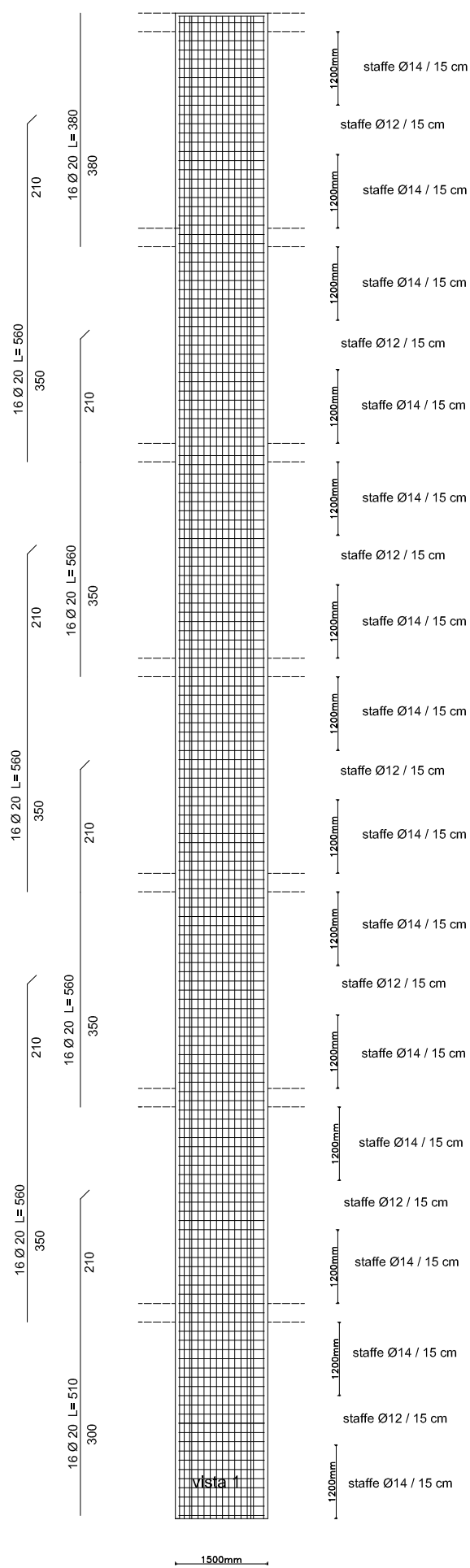
2800 mm



legature armatura semplice  
Ø 8 / 30cm



L = 45 cm



PIANO SESTO

PIANO QUINTO

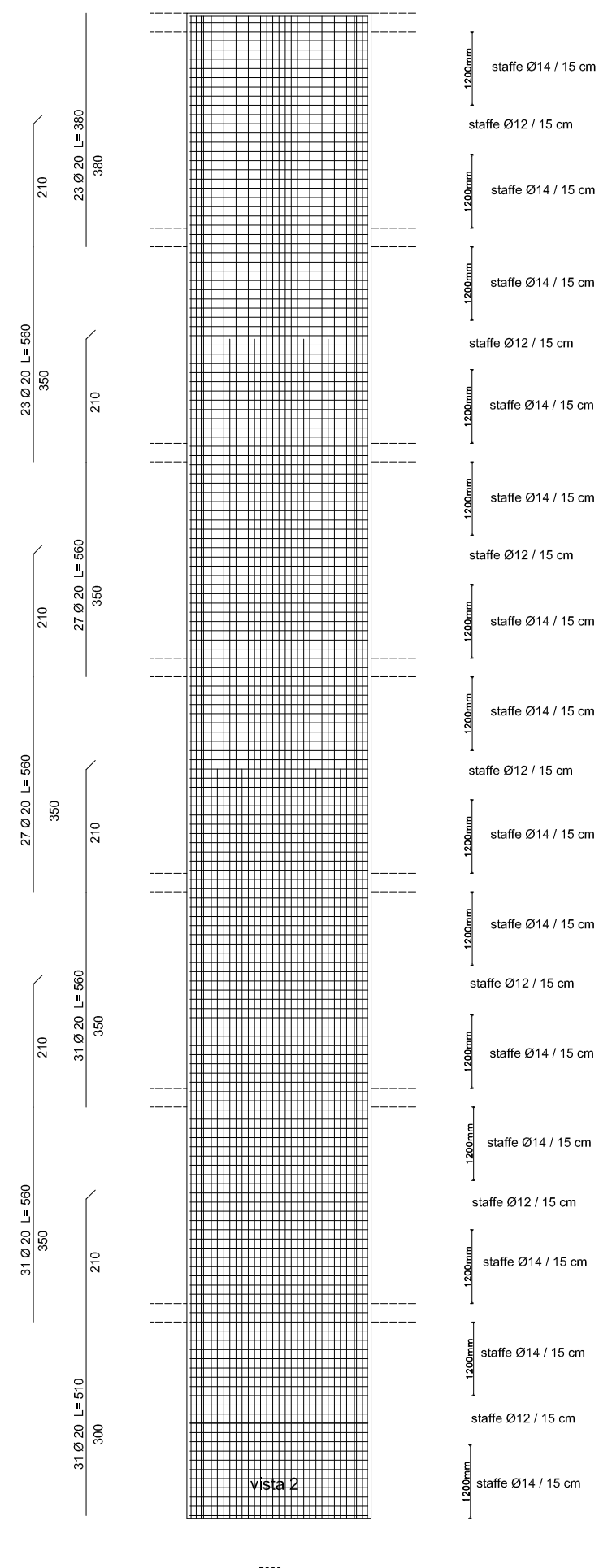
PIANO QUARTO

PIANO TERZO

PIANO SECONDO

PIANO PRIMO

PIANO TERRA

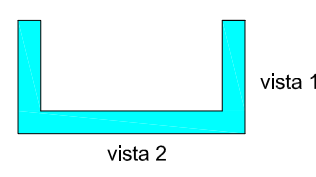
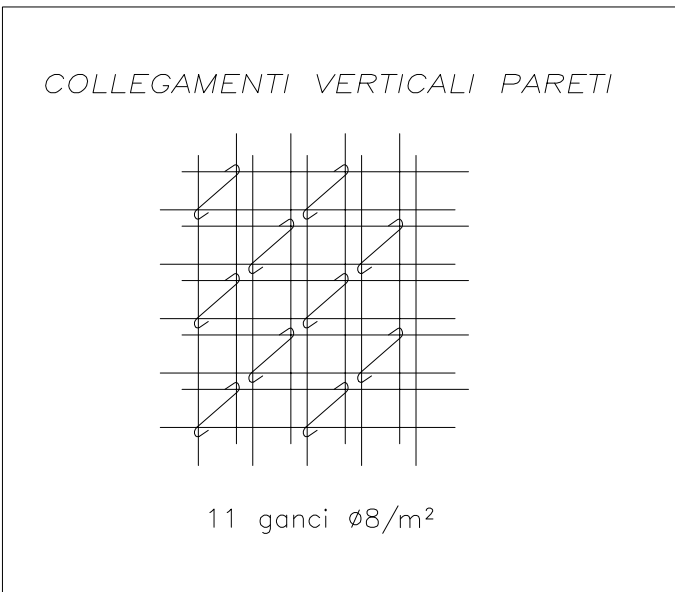


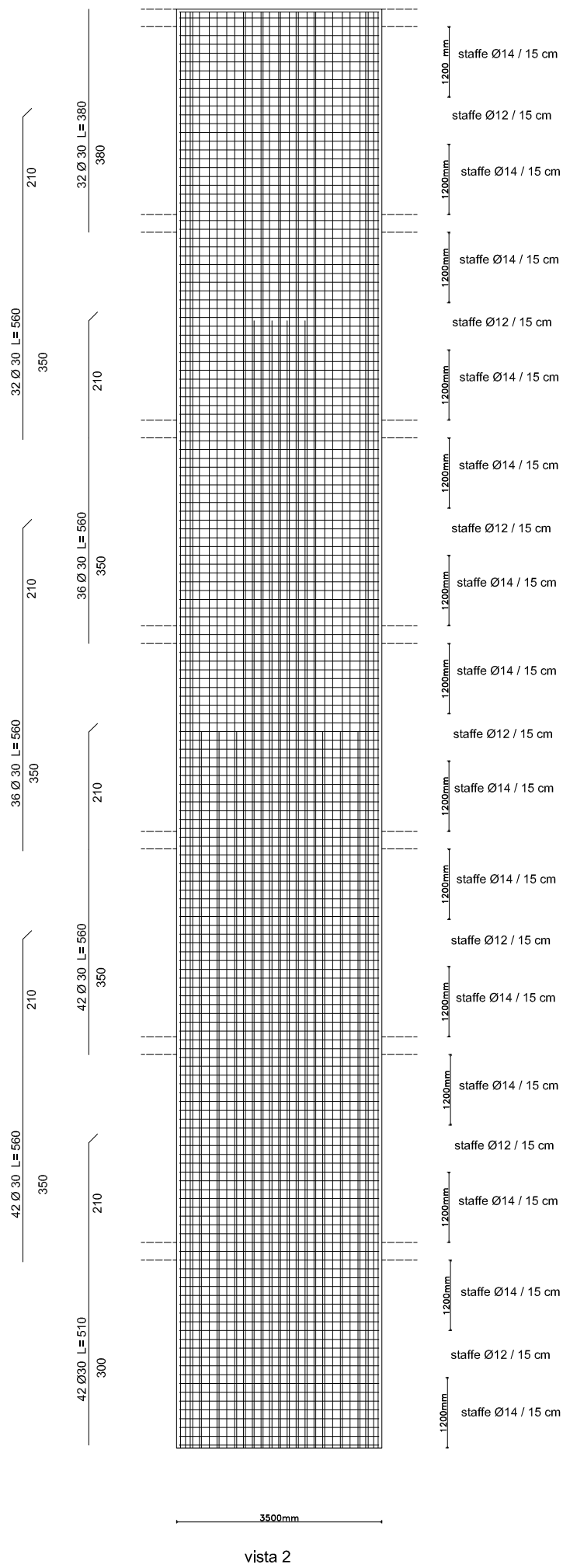
scala 1: 100

MATERIALI IMPIEGATI

ACCAIAO:				
TONDINO ACCIAIOSO AD ADERENZA MIGLIORATA FeB44 K [fyk = 430 N/mm²] [fy/fk < 1.5] [1.15 < ft/fy < 1.35]				
CALCESTRUZZO:	CLASSE RESISTENZA	CLASSE ESPOSIZIONE		CLASSE CONSISTENZA
SETTI	Rck 300 (C25/30)	ENV206-UN9858	EN206	S3
		2A	XC3	
	GRADO COMPATTAZIONE Gc > 0.97			

- E' PRESCRITTA LA VIBRATURA MECCANICA DEI GETTI





vista 2

PIANO SESTO

PIANO QUINTO

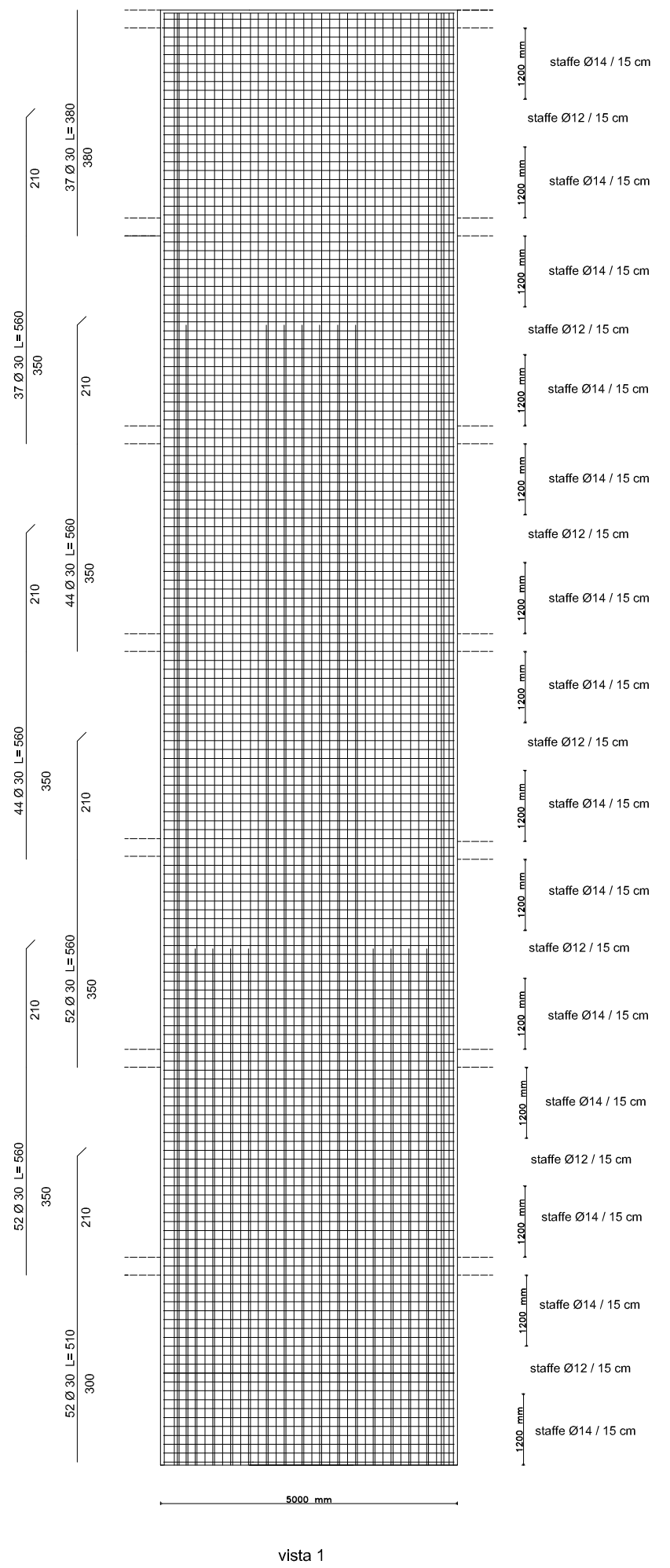
PIANO QUARTO

PIANO TERZO

PIANO SECONDO

PIANO PRIMO

PIANO TERRA



vista 1

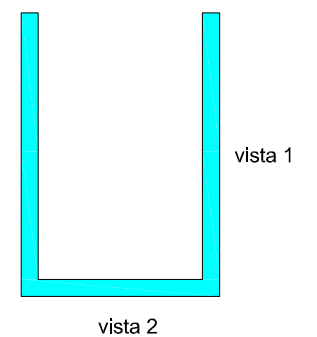
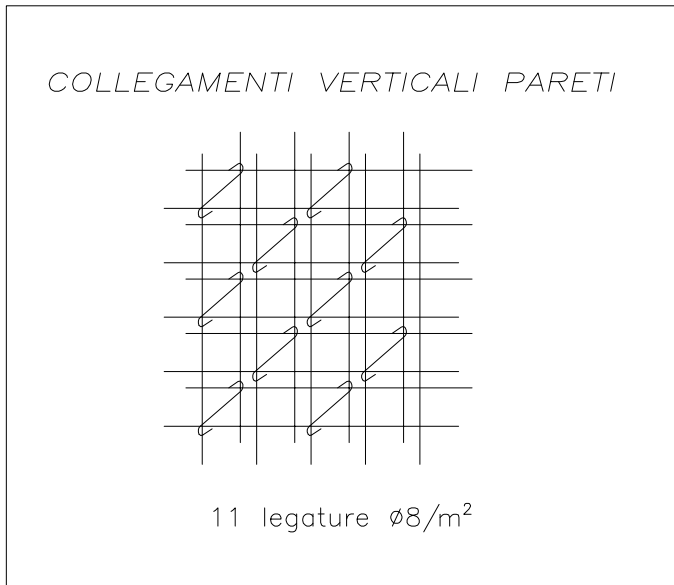
scala 1: 100

MATERIALI IMPIEGATI

ACCIAIO:  
 TONDINO ACCIAIOSO AD ADERENZA MIGLIORATA FeB44 K [  $f_{yk} = 430 \text{ N/mm}^2$  ] [  $f_y/f_k < 1.5$  ]  
 [  $1.15 < f_t/f_y < 1.35$  ]

CALCESTRUZZO:	CLASSE RESISTENZA	CLASSE ESPOSIZIONE		CLASSE CONSISTENZA
SETTI	Rck 300 (C25/30)	ENV206-UNI9858	EN206	S3
	GRADO COMPATTAZIONE $G_c > 0,97$			

- E' PRESCRITTA LA VIBRATURA MECCANICA DEI GETTI



# Setto centrale piano terra scala 1: 50

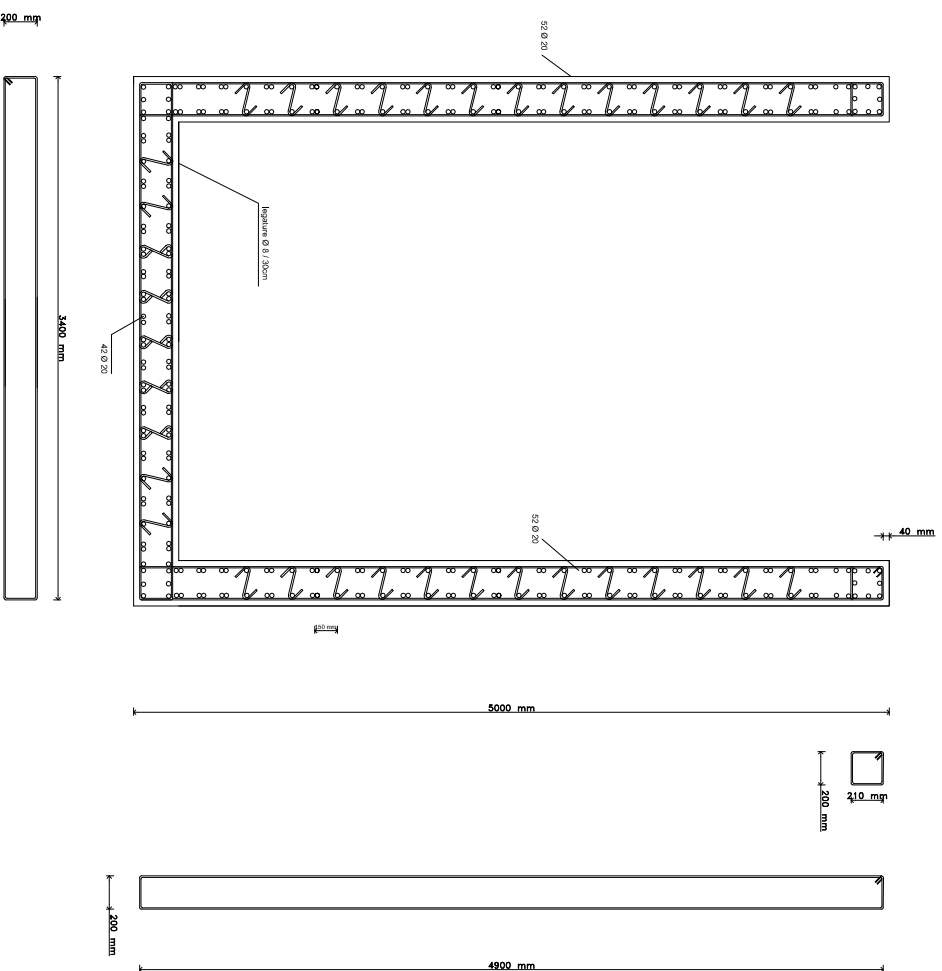
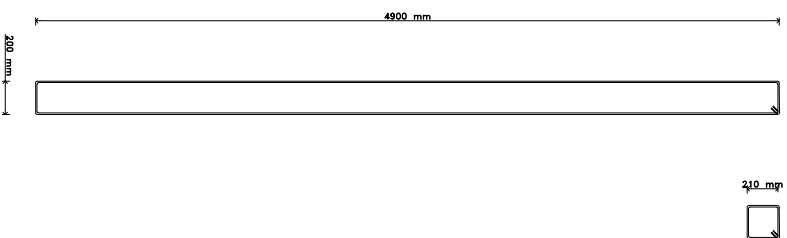
## MATERIALI IMPIEGATI

ACCIAIO:

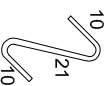
TONDINO ACCIAIOSO AD ADERENZA MIGLIORATA FeB44 K [  $f_yk = 430 \text{ N/mm}^2$  ] [  $f_t/Rk < 1.5$  ]  
[  $1.15 < f_t/f_y < 1.35$  ]

CALCESTRUZZO:	CLASSE RESISTENZA	CLASSE ESPOSIZIONE		CLASSE CONSISTENZA
		EN/206-UNI9888	EN206	
SETTI	Rck 300 (C25/30)	2A	XC3	S3
GRADO COMPATTAZIONE $G_c > 0.97$				

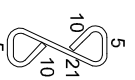
- E' PRESCRITTA LA VIBRATURA MECCANICA DEI GETTI



legature armatura semplice      Ø 8 / 30cm      legature armatura accoppiata  
Ø 8 / 30cm



L = 45 cm



L = 55 cm

# Setto centrale piano terzo scala 1: 50

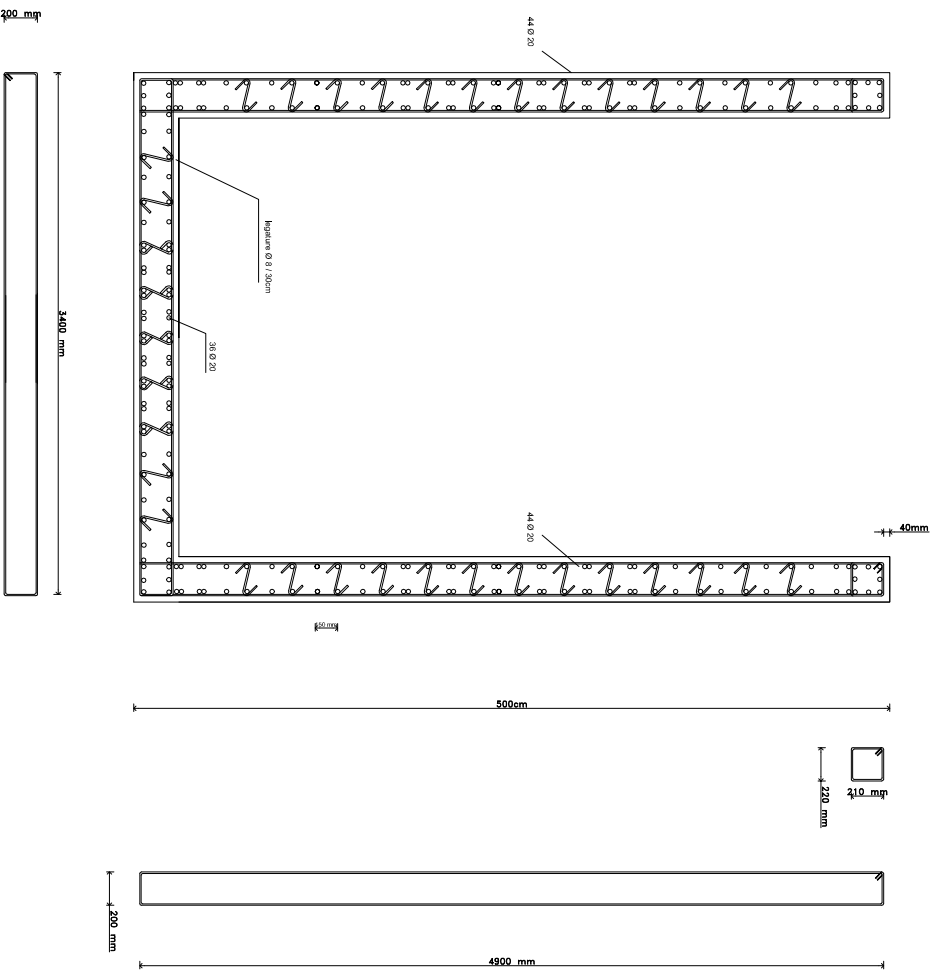
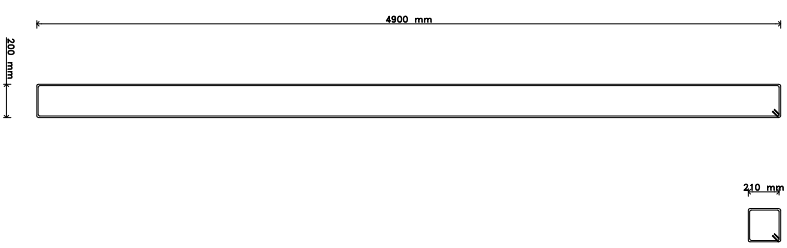
MATERIALI IMPIEGATI

ACCIAIO:

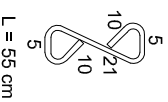
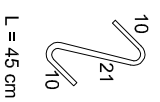
TONDINO ACCIAIOSO AD ADERENZA MIGLIORATA FeB44 K [  $f_yk = 430 \text{ N/mm}^2$  ] [  $f_t/Rk < 1.5$  ]  
[  $1.15 < f_t/f_y < 1.35$  ]

CALCESTRUZZO:	CLASSE RESISTENZA	CLASSE ESPOSIZIONE		CLASSE CONSISTENZA
		EN/206-UNI9888	EN206	
SETTI	Rck 300 (C25/30)	2A	XC3	S3
GRADO COMPATTAZIONE $G_c > 0.97$				

- E' PRESCRITTA LA VIBRATURA MECCANICA DEI GETTI



legature armatura semplice Ø 8 / 30cm      legature armatura accoppiata Ø 8 / 30cm



# Setto centrale piano quinto scala 1:50

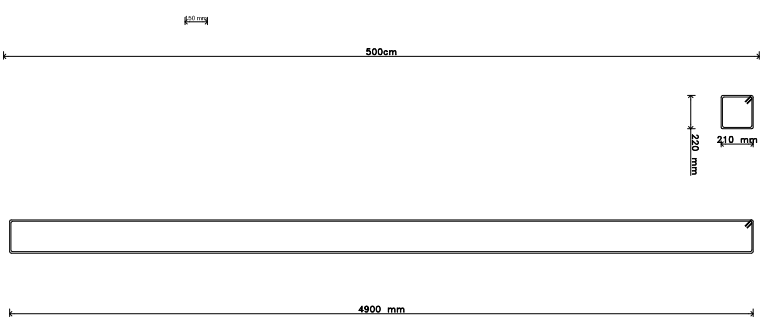
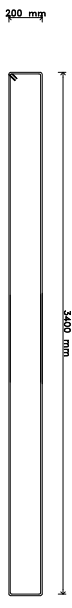
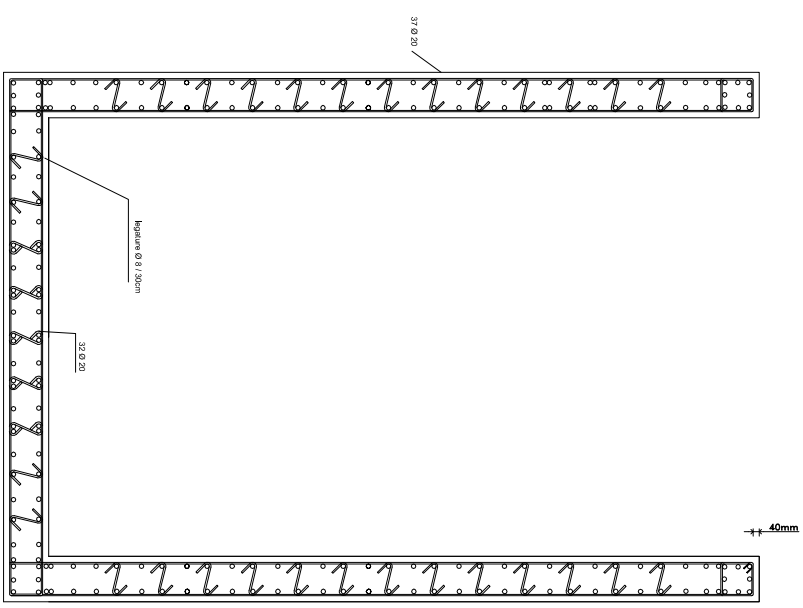
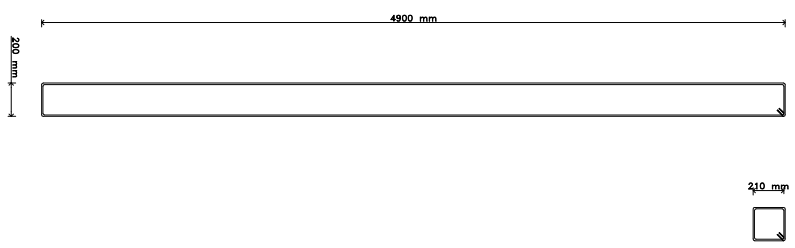
MATERIALI IMPIEGATI

ACCIAIO:

TONDINO ACCIAIOSO AD ADERENZA MIGLIORATA FeB44 K [  $f_yk = 430 \text{ N/mm}^2$  ] [  $f_t/f_k < 1.5$  ]  
[  $1.15 < f_t/f_y < 1.35$  ]

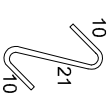
CALCESTRUZZO:	CLASSE RESISTENZA	CLASSE ESPOSIZIONE		CLASSE CONSISTENZA
		EN/206-UNI9888	EN206	
SETTI	Rck 300 (C25/30)	2A	XC3	S3
GRADO COMPATTAZIONE $G_c > 0.97$				

- E' PRESCRITTA LA VIBRATURA MECCANICA DEI GETTI



legature armatura semplice

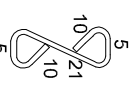
Ø 8 / 30cm



L = 45 cm

legature armatura accoppiata

Ø 8 / 30cm



L = 55 cm

# Setto laterale piano terra scala 1:50

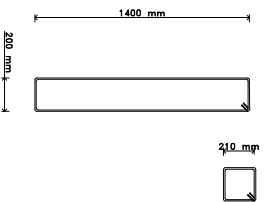
## MATERIALI IMPIEGATI

ACCIAIO:

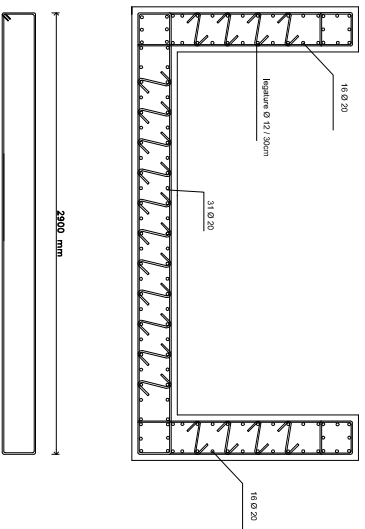
TONDINO ACCIAIOSO AD ADERENZA MIGLIORATA FeB44 K [  $f_yk = 430 \text{ N/mm}^2$  ] [  $f_t/Rk < 1.5$  ]  
[  $1.15 < f_t/f_y < 1.35$  ]

CALCESTRUZZO:	CLASSE RESISTENZA	CLASSE ESPOSIZIONE		CLASSE CONSISTENZA
		EN/206-UNI9888	EN206	
SETTI	Rck 300 (C25/30)	2A	XC3	S3
GRADO COMPATTAZIONE $G_c > 0.97$				

- E' PRESCRITTA LA VIBRATURA MECCANICA DEI GETTI

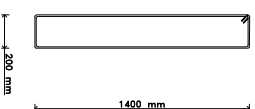


200 mm



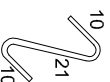
2400 mm

210 mm  
220 mm

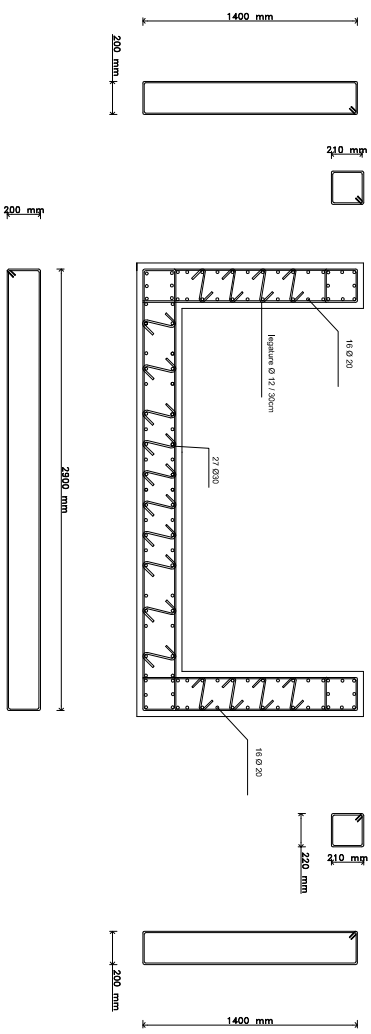


200 mm

legature armatura semplice  
Ø 8 / 30cm



L = 45 cm



# Setto laterale piano terzo scala 1: 50

## MATERIALI IMPIEGATI

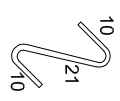
ACCIAIO:

TONDINO ACCIAIOSO AD ADERENZA MIGLIORATA FeB44 K [  $f_yk = 430 \text{ N/mm}^2$  ] [  $f_t/Rk < 1.5$  ]  
[  $1.15 < f_t/f_y < 1.35$  ]

CALCESTRUZZO:	CLASSE RESISTENZA	CLASSE ESPOSIZIONE		CLASSE CONSISTENZA
		EN/206-UNI9888	EN206	
SETTI	Rck 300 (C25/30)	2A	XC3	S3
	GRADO COMPATTAZIONE $G_c > 0.97$			

- E' PRESCRITTA LA VIBRATURA MECCANICA DEI GETTI

legature armatura semplice  
Ø 8 / 30cm



L = 45 cm